

RRAS Configuration Overview for Windows XP

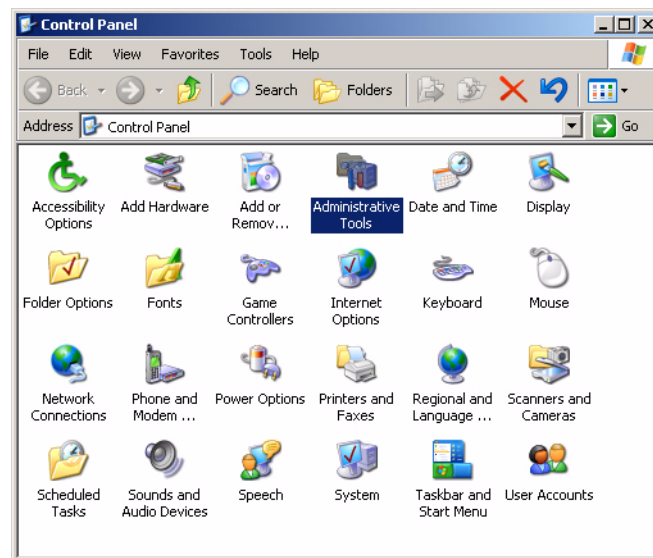
Note: This document contains sample procedures to assist you in quickly enabling RRAS and installing a modem in RRAS. There are several ways in which to do this. If you are familiar with a different method, feel free to use your own method.

This is not a complete procedure for configuring RRAS. For additional information, use the Microsoft help system or contact [Microsoft Corporation](#) for more in depth RRAS support.

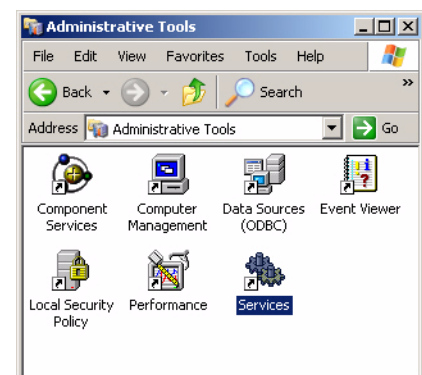
Setting Up RRAS

Use the following procedure as a reference to set up RRAS in Windows XP.

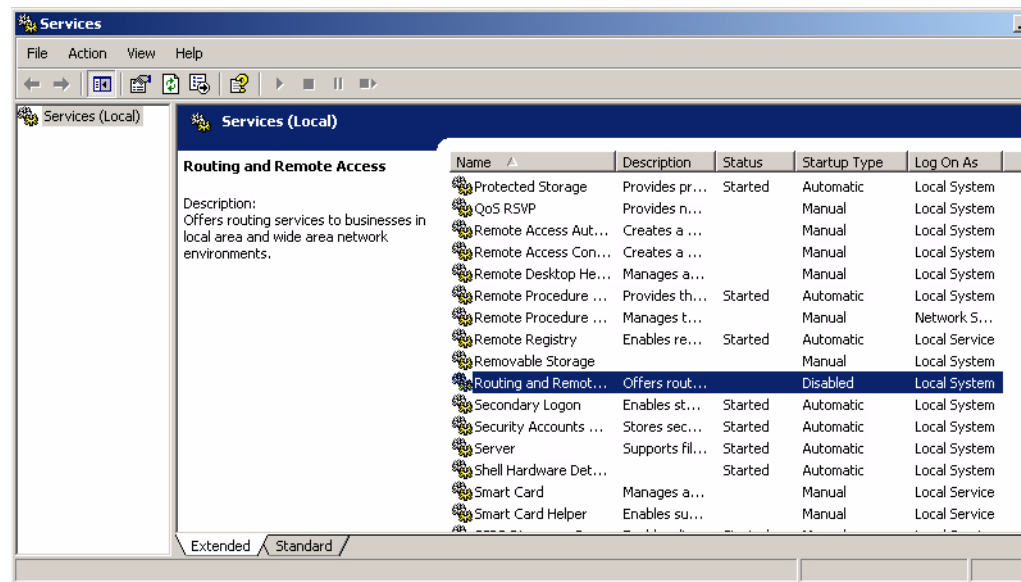
1. Open the Control Panel (from the **Start** button) and select **Administrative Tools**.



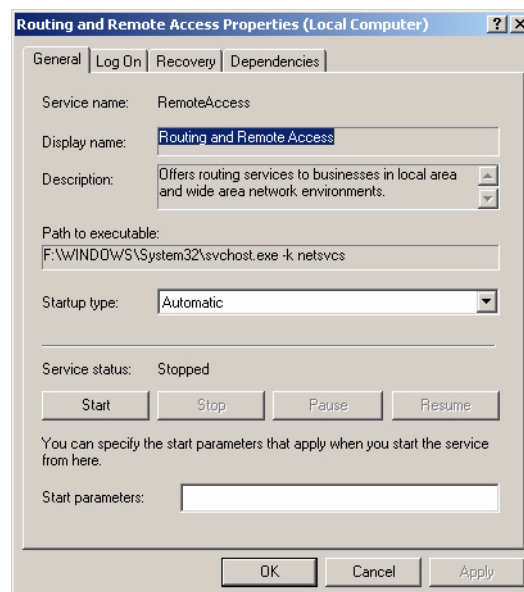
2. Double-click on the **Services** icon.



3. Right-click on the **Routing and Remote Access** entry and select **Properties**.

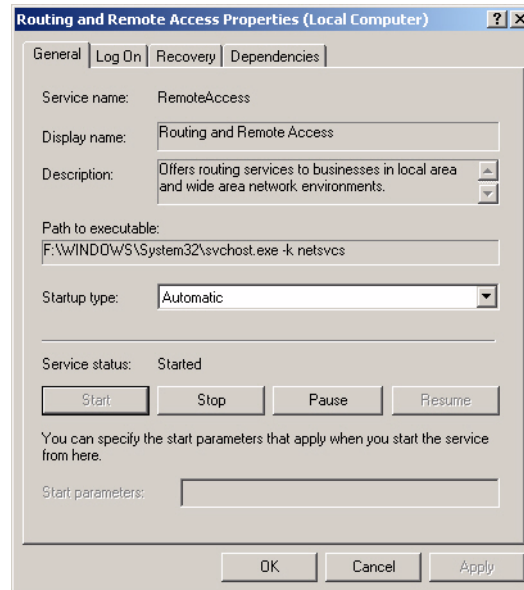


4. Select **Automatic** from the **Startup type** drop list.

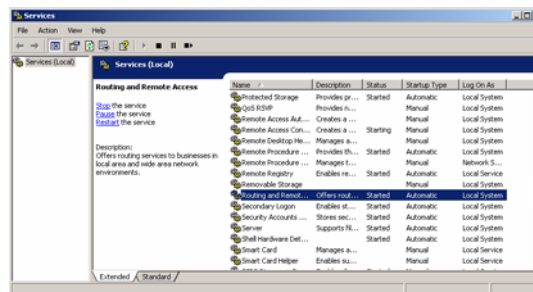


5. Select the **Start** button.

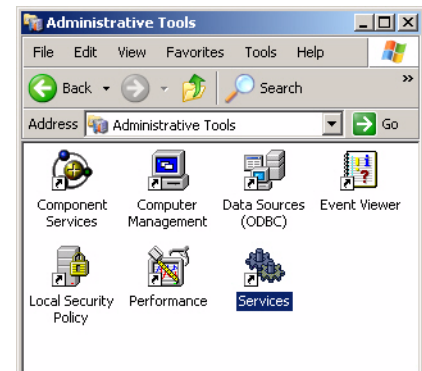
6. Select **Ok** to close the Routing and Remote Access Properties (Local Computer) window.



7. Close the Services control panel.



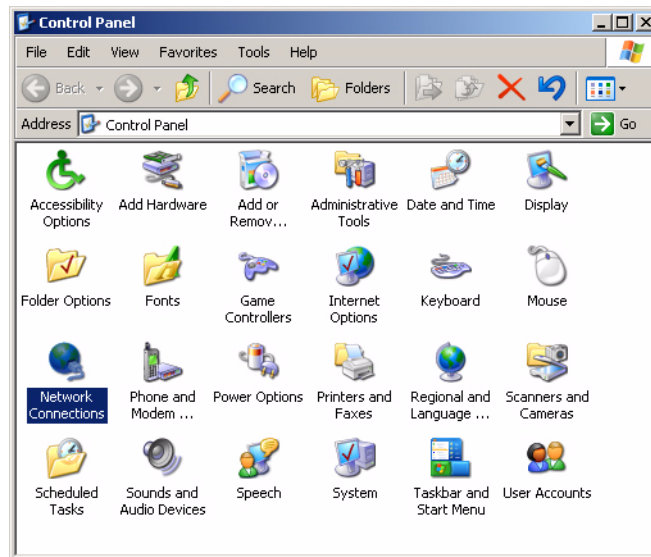
8. Close the Administrative Tools Control panel.



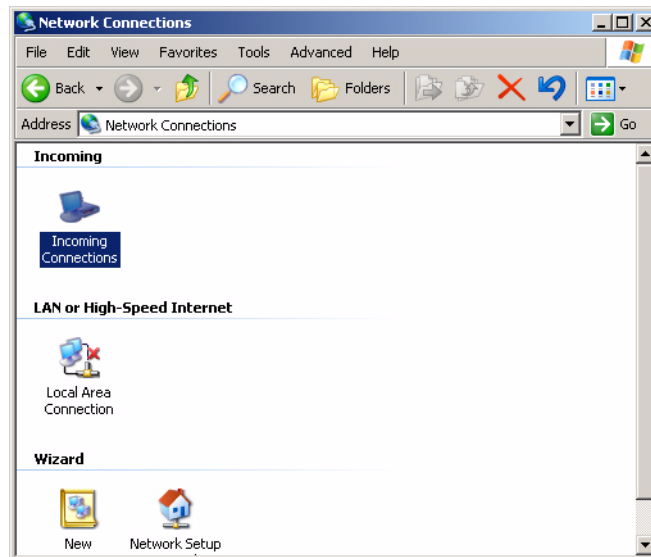
Adding Modem to RRAS

Use the following procedure as a reference if you need assistance with setting up incoming calls on a modem port.

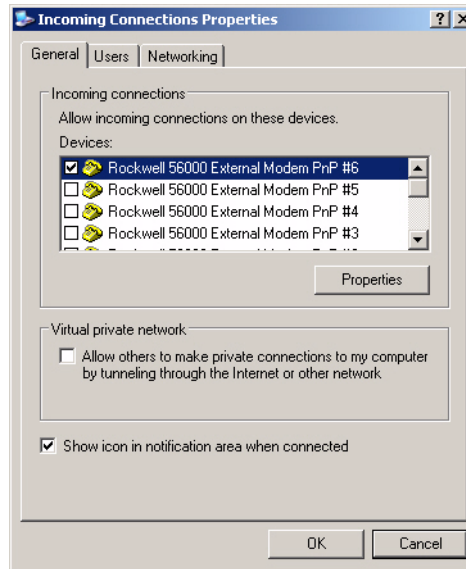
1. Open the Control Panel, right-click the **Network Connections** icon, and select **Open**.



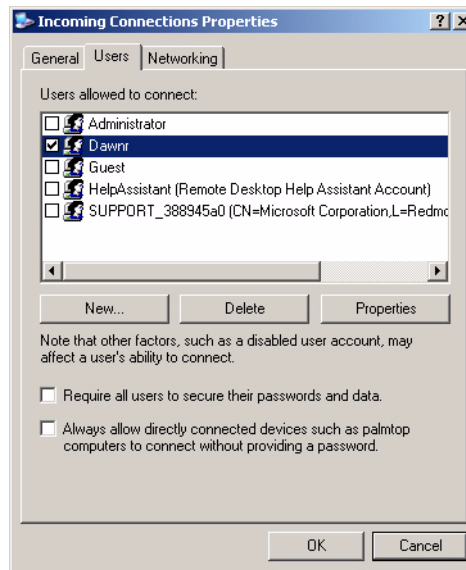
2. Right-click the **Incoming Connections** icon and select **Properties**.



3. Select the modem or modems that you want to setting up incoming calls upon.

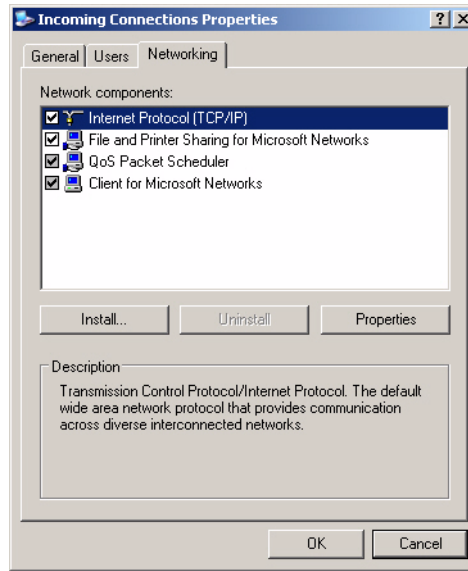


4. Select the Users tab and select the users that are permitted dial-in permission.

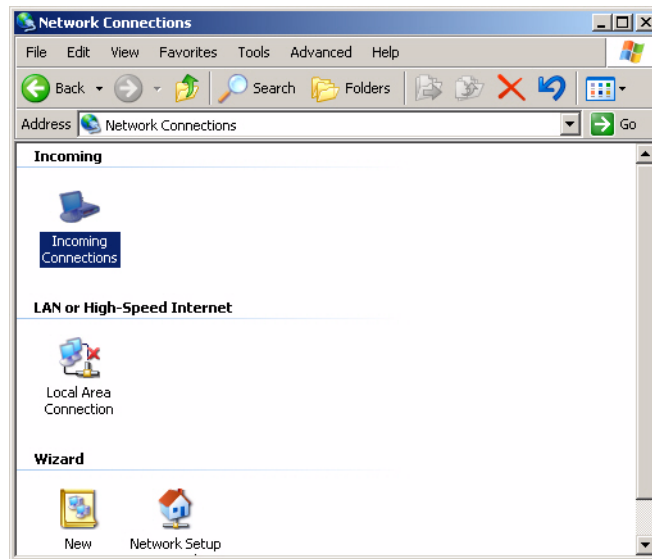


Note: If necessary, use the Add button to add addition users.

5. Select the **Networking** tab, configure any necessary protocols, and select **Ok**.



6. Close the Network Connections control panel.



Trademark Notices

Control is a trademark of Comtrol Corporation.

Windows XP and Microsoft are registered trademarks of Microsoft Corporation.

Other product names mentioned herein may be trademarks and/or registered trademarks of their respective owners.

First Edition, May 9, 2003

Copyright © 2003. Comtrol Corporation.

All Rights Reserved.

Comtrol Corporation makes no representations or warranties with regard to the contents of this document or to the suitability of the Comtrol product for any particular purpose. Specifications subject to change without notice. Some software or features may not be available at the time of publication. Contact your reseller for current product information.

Document Number: 2000306 Rev. A