

Removing the DeviceMaster Windows IPv4 Driver and Installing the DeviceMaster Windows IPv6 Driver (v3.02)

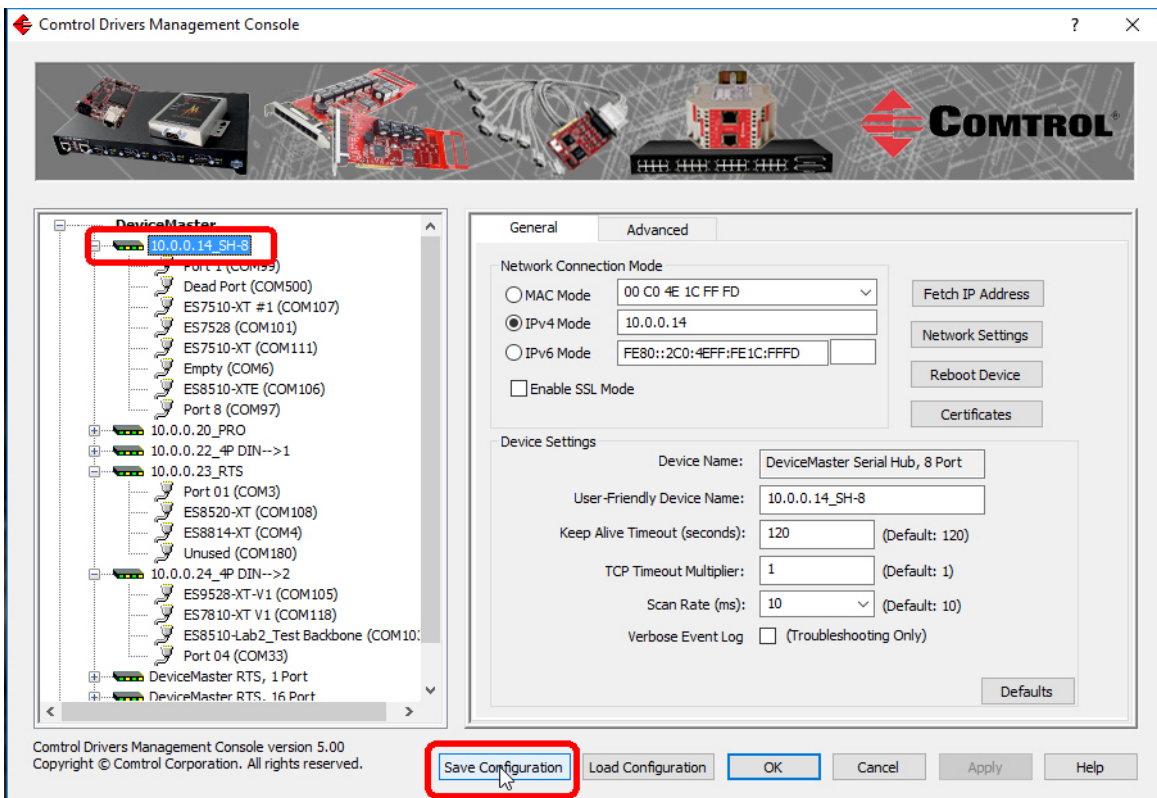
To upgrade from the IPv4 device driver to the DeviceMaster Windows IPv6 driver v3.02 you must first remove the IPv4 driver and then install the IPv6 driver.

You may want to save DeviceMaster driver configuration files so that you quickly rebuild your DeviceMaster device and port configuration.

Use the following steps to remove your driver and install the **DeviceMaster_Windows_WSK_3.02.exe** device driver.

Note: *Administrative privileges are required to remove device drivers on Windows operating systems newer than Windows Server 2003.*

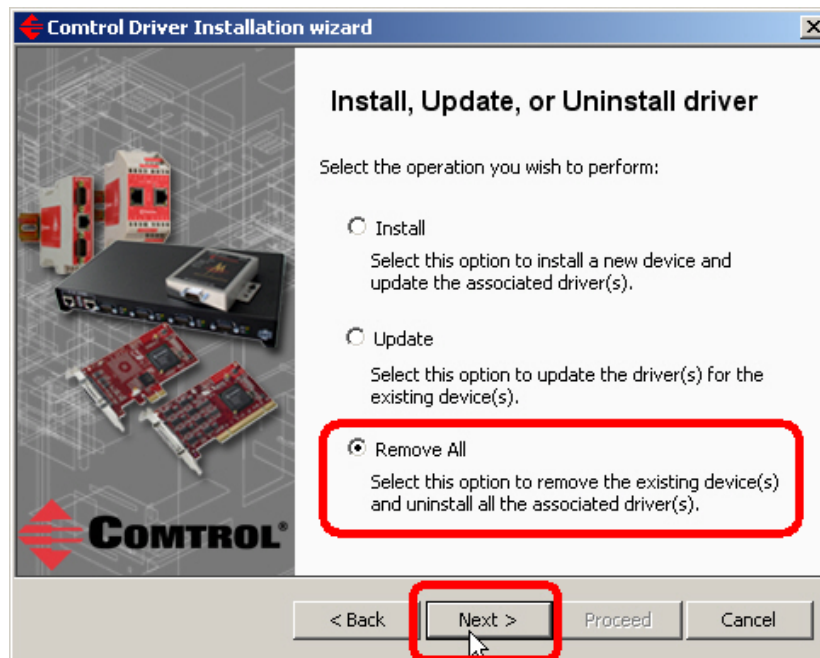
1. If desired, save the driver configuration file for each DeviceMaster.
 - a. Highlight the DeviceMaster in the *Tree View* pane.
 - b. Click the **Save Configuration** button.



- c. Browse to the location that you wish to save the file and click the **Save** button. Optionally, you can rename the default file name, which reflects the user-friendly device name.

Removing the DeviceMaster Windows IPv4 Driver and Installing the DeviceMaster Windows IPv6 Driver (v3.02)

2. Remove all installed DeviceMaster devices and ports.
 - a. From the Windows Start button, click **Control | DeviceMaster Driver Installation Wizard**.
 - b. Click **Yes** to the *Do you want to allow this app to make changes to your device?* message.
 - c. Click **Next** to start the Control Driver Installation Wizard.
 - d. Click **Remove All** and **Next**.



3. Once the process completes, reboot the PC.
4. Remove all instances of the driver package.
 - Depending on your Windows operating system, either open **Add/Remove programs, Programs and Features** or **Apps & Features**.
 - Locate the **DeviceMaster Windows Driver** package and uninstall it from your system.
 - If you see other instances of that same driver listed, remove them all, one at a time.
 - Delete any copies of the .exe driver assembly file residing on the system.
5. Install the new driver by clicking on the **DeviceMaster_Windows_WSK_3.02.exe** file.
6. Follow the installation wizard. If you need installation information, you can refer to the [DeviceMaster NS-Link Device Driver User Guide](#).
7. If you saved configuration files, open **the Control | Devicemaster Driver Management Console**, highlight the DeviceMaster, and click the **Load Configuration** button.
8. Browse to the appropriate file and if appropriate, click **Yes** to the *Do you want to load these settings?* pop up message.