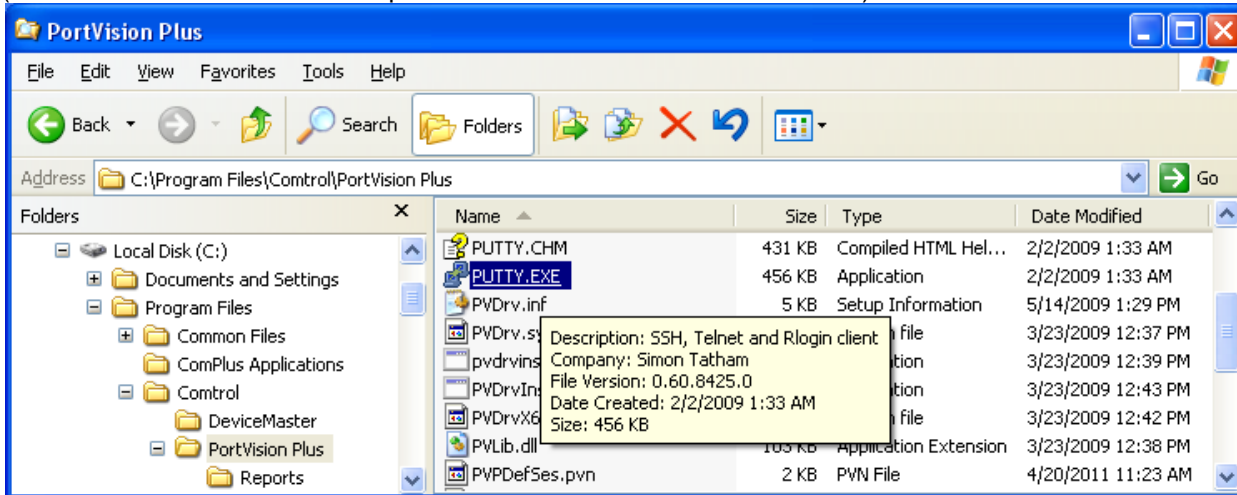


Monitor Serial Data in DeviceMaster using PuTTY to Log File

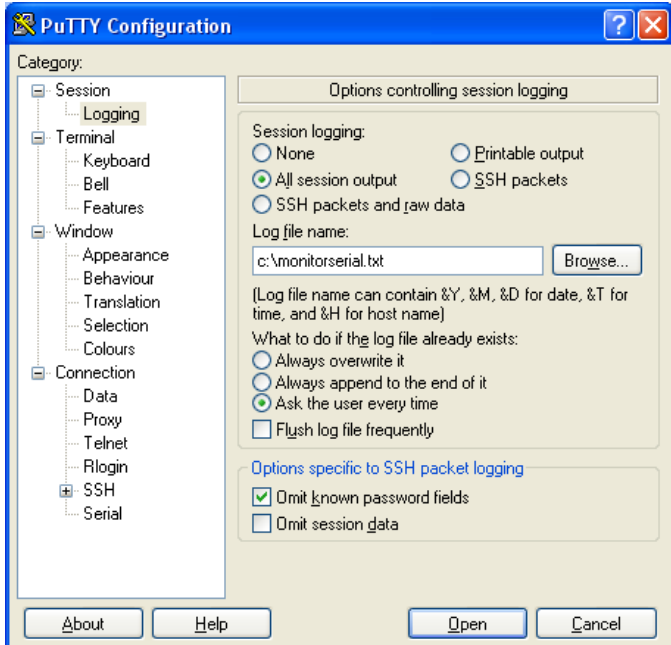
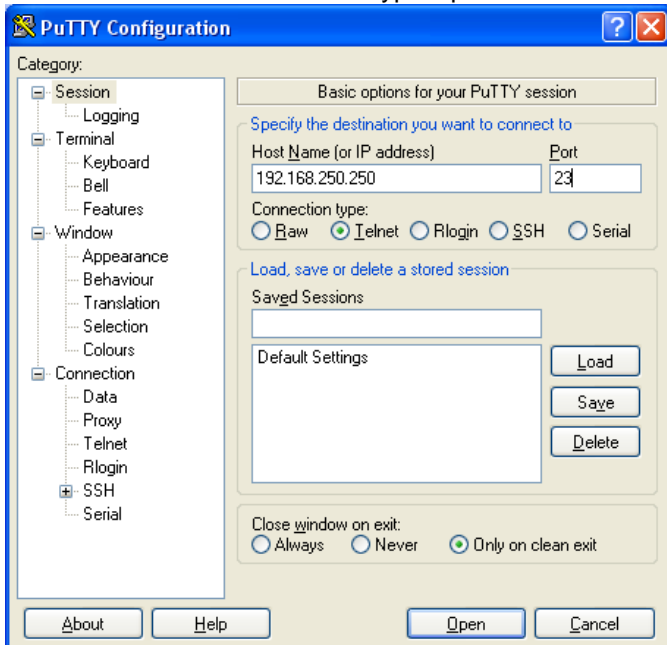
Open Windows Explorer and path to the C:\Program Files\Comtrol\PortVision DX folder
(This screen shot has not been updated to show the PortVision DX folder)



You will see a file called PUTTY.EXE which you will double click to launch
C:\Program Files\Comtrol\PortVision DX\putty.exe

Enter the appropriate IP Address of the DeviceMaster
and use Socket 23 as shown here.

Be sure to set the 'Connection Type' option for 'Telnet'



Click the Logging folder

For session Logging select the "All session output"

Enter the log file name as c:\monitorserial.txt

Remove the checkmark in the "Flush log file frequently" option

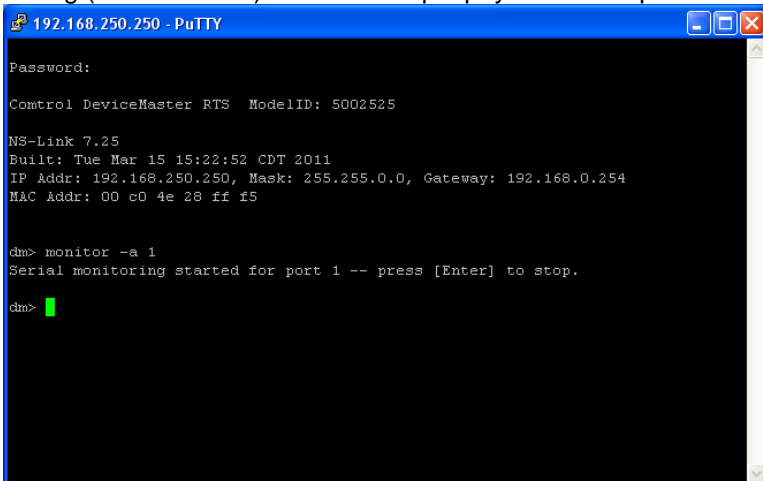
Click Open

When the window opens, you will be prompted for a password



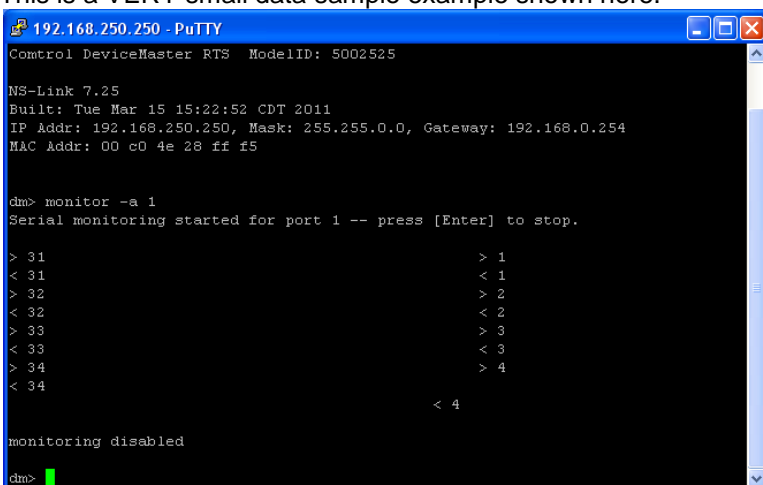
Press enter for the password unless one has been assigned, in which case enter the appropriate password. You will now be at a dm> prompt

Enter the command as shown (without quotes) "monitor -a #" where # is the number of the physical serial port that we are tracing (Not the com#). In this example physical serial port 1 is the port to be monitored. Be sure to include the spaces.



You should see the message above that "Serial monitoring started..."

Once the application has started and data is starting to transfer, you should see data appearing on the screen. While collecting the trace you may minimize the PuTTY windows. This is a VERY small data sample example shown here.



Run the monitoring until error encountered. Press [Enter] to stop the monitor process.

Send the resultant text file to your Control Tech Support Representative.