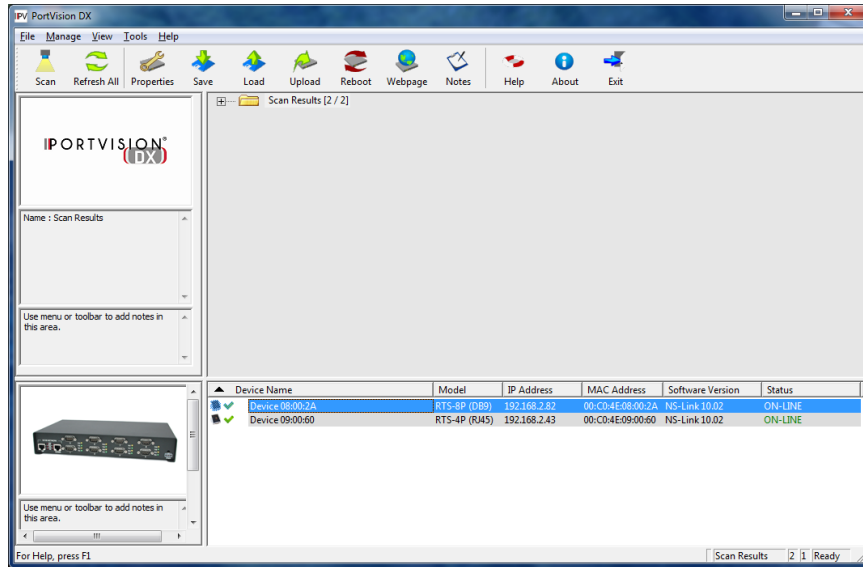
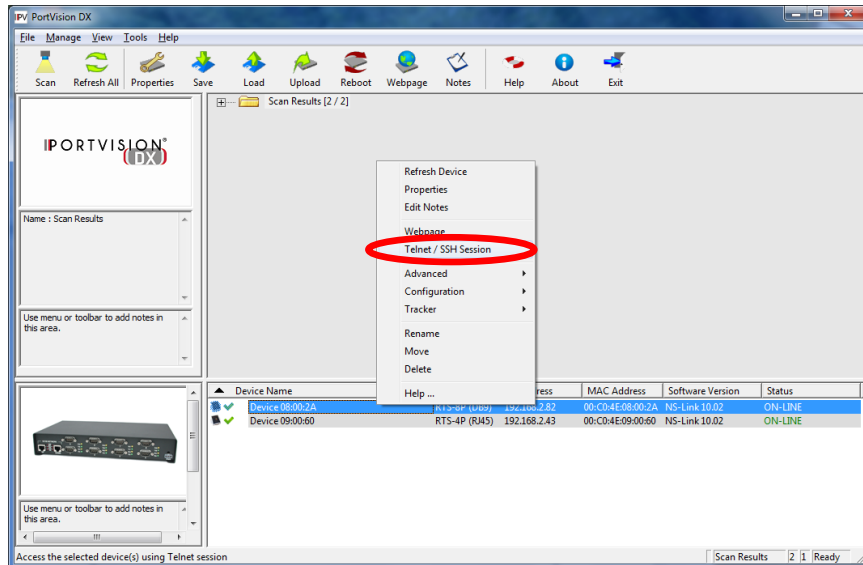


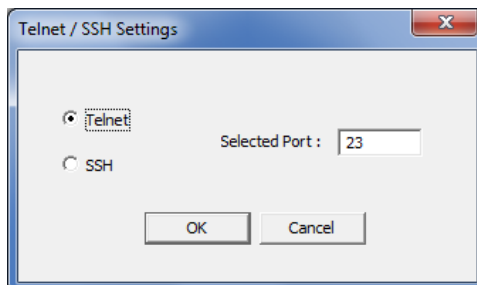
Password Protect the DeviceMaster Web Page & Telnet Sessions



Open PortVision DX and high-light the appropriate unit



Right Click on the DeviceMaster and select Telnet / SSH Session

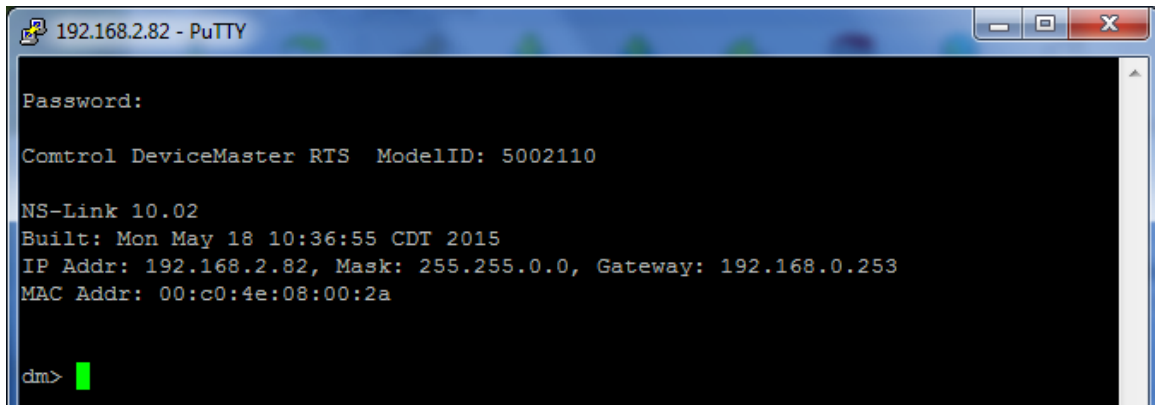


Leave the defaults and click OK and a PuTTY window will open.



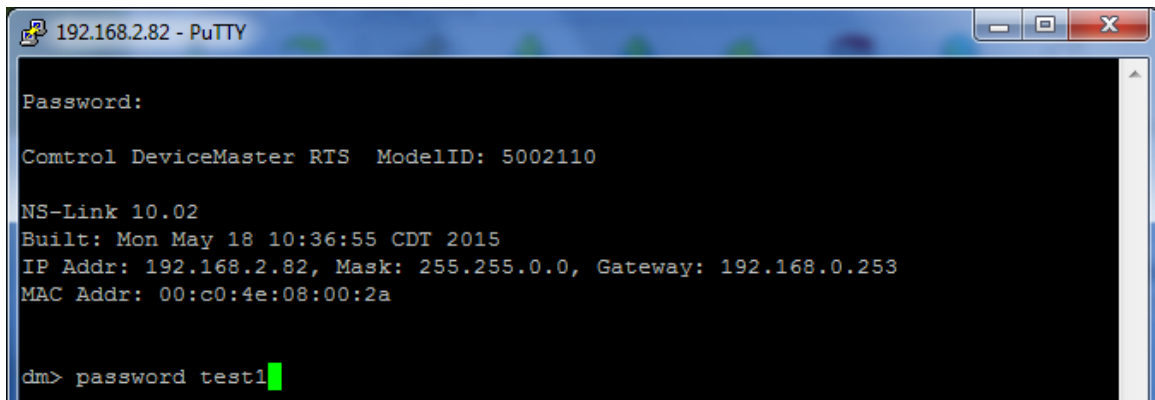
```
192.168.2.82 - PuTTY
Password: █
```

By default no password is assigned. Press the Enter key.



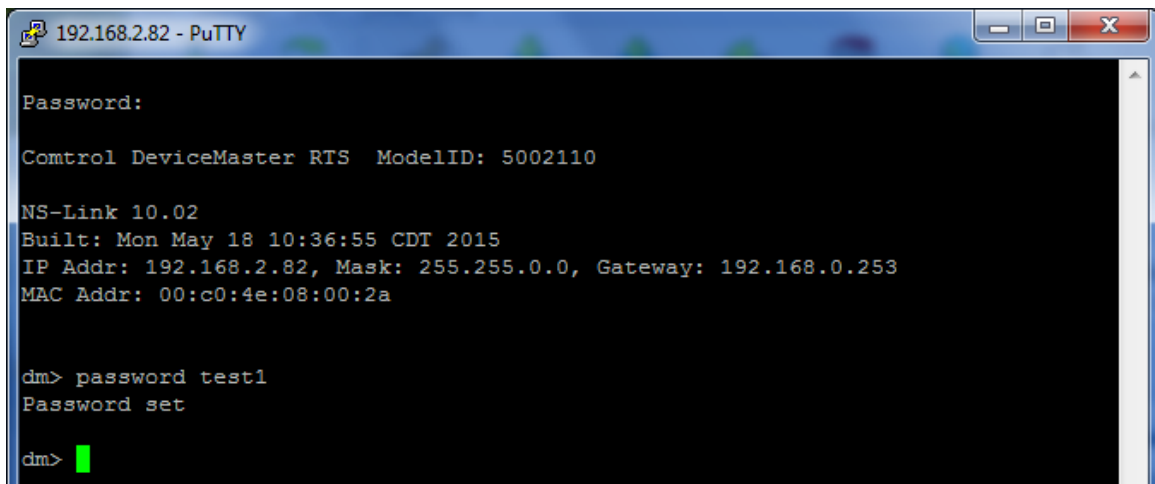
```
192.168.2.82 - PuTTY
Password:
Control DeviceMaster RTS ModelID: 5002110
NS-Link 10.02
Built: Mon May 18 10:36:55 CDT 2015
IP Addr: 192.168.2.82, Mask: 255.255.0.0, Gateway: 192.168.0.253
MAC Addr: 00:c0:4e:08:00:2a
dm> █
```

You will be presented some information and a dm> prompt.



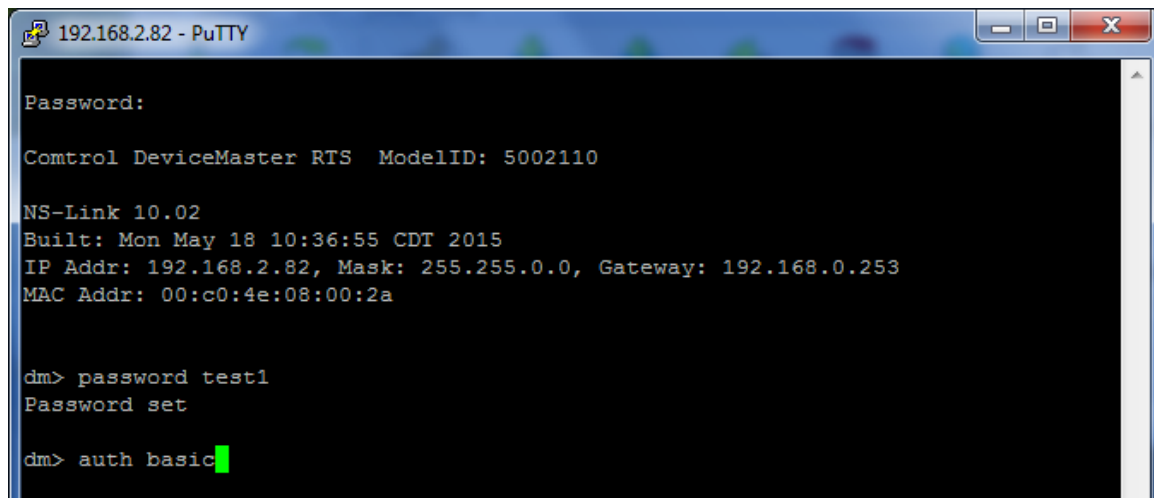
```
192.168.2.82 - PuTTY
Password:
Control DeviceMaster RTS ModelID: 5002110
NS-Link 10.02
Built: Mon May 18 10:36:55 CDT 2015
IP Addr: 192.168.2.82, Mask: 255.255.0.0, Gateway: 192.168.0.253
MAC Addr: 00:c0:4e:08:00:2a
dm> password test1█
```

Enter your desired password. Here it is shown in clear text. This will be the only time the password is displayed. Press the Enter key.



```
192.168.2.82 - PuTTY
Password:
Control DeviceMaster RTS ModelID: 5002110
NS-Link 10.02
Built: Mon May 18 10:36:55 CDT 2015
IP Addr: 192.168.2.82, Mask: 255.255.0.0, Gateway: 192.168.0.253
MAC Addr: 00:c0:4e:08:00:2a
dm> password test1
Password set
dm> █
```

It will confirm the password has been set and return you to the dm> prompt.

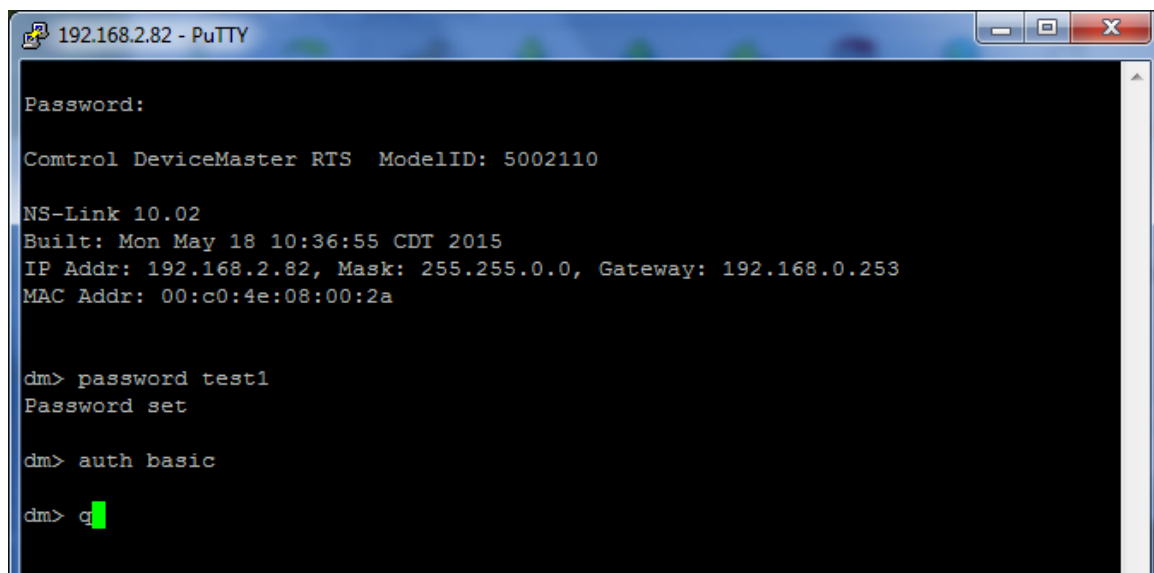


```
192.168.2.82 - PuTTY
Password:
Control DeviceMaster RTS ModelID: 5002110
NS-Link 10.02
Built: Mon May 18 10:36:55 CDT 2015
IP Addr: 192.168.2.82, Mask: 255.255.0.0, Gateway: 192.168.0.253
MAC Addr: 00:c0:4e:08:00:2a

dm> password test1
Password set

dm> auth basic
```

Enter “auth basic” (without quotes) and press Enter. This will enable the password usage when opening the web pages of the DeviceMaster and return you to the dm> prompt.



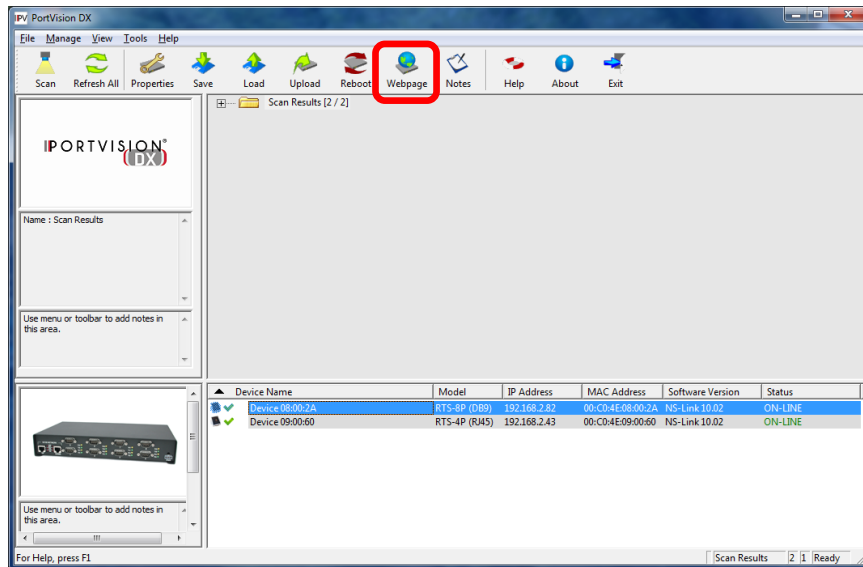
```
192.168.2.82 - PuTTY
Password:
Control DeviceMaster RTS ModelID: 5002110
NS-Link 10.02
Built: Mon May 18 10:36:55 CDT 2015
IP Addr: 192.168.2.82, Mask: 255.255.0.0, Gateway: 192.168.0.253
MAC Addr: 00:c0:4e:08:00:2a

dm> password test1
Password set

dm> auth basic

dm> q
```

At the dm> prompt enter “q” (without quotes) and press Enter. This will close the telnet window.

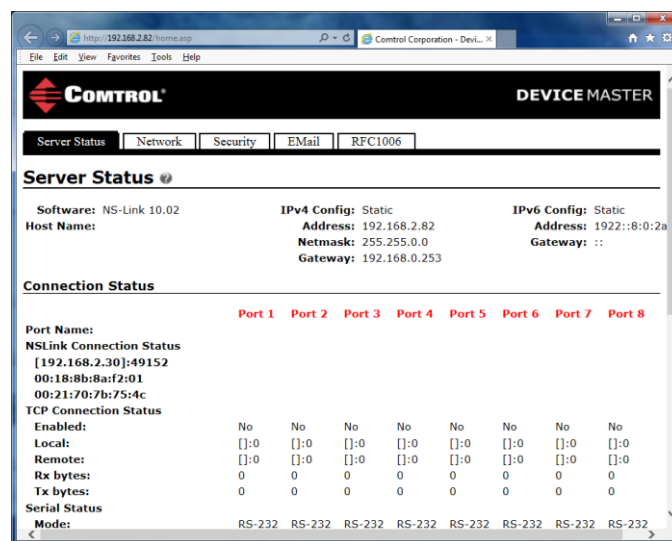


Return to PortVision DX and high-light the DeviceMaster, and click on the WebPage icon on the launch bar.

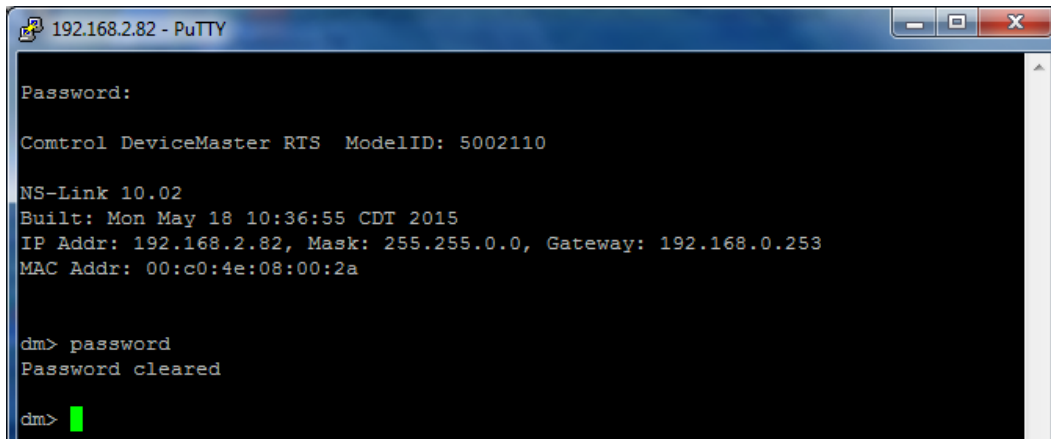


You will be prompted for a User name and Password.

The User name does not exist. It will not matter if it is blank or a name is input. Enter the password you created and click OK. The web page of the DeviceMaster will open.



To remove the password and authentication

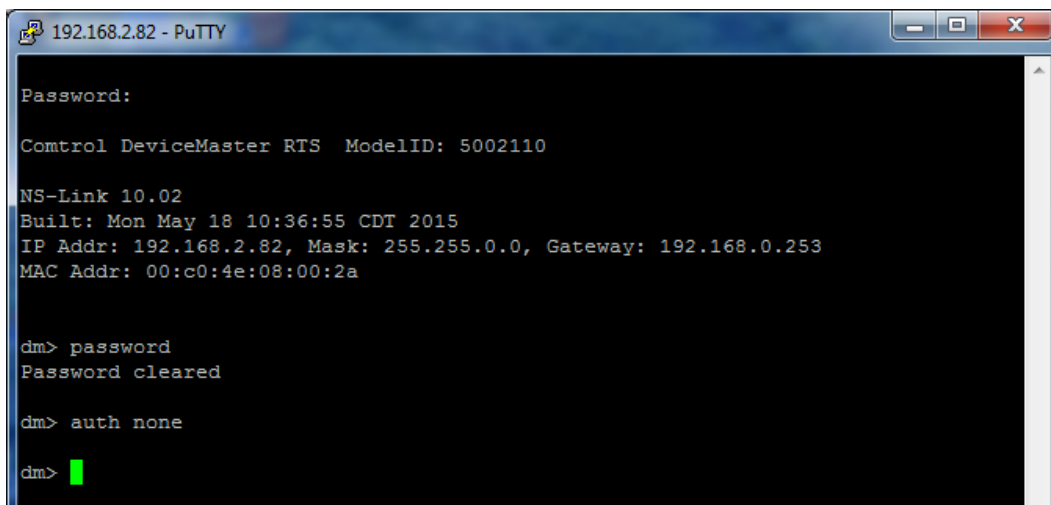


```
192.168.2.82 - PuTTY
Password:
Control DeviceMaster RTS ModelID: 5002110
NS-Link 10.02
Built: Mon May 18 10:36:55 CDT 2015
IP Addr: 192.168.2.82, Mask: 255.255.0.0, Gateway: 192.168.0.253
MAC Addr: 00:c0:4e:08:00:2a

dm> password
Password cleared

dm>
```

To clear the password, at the dm> prompt enter “password” (without quotes) and press Enter.



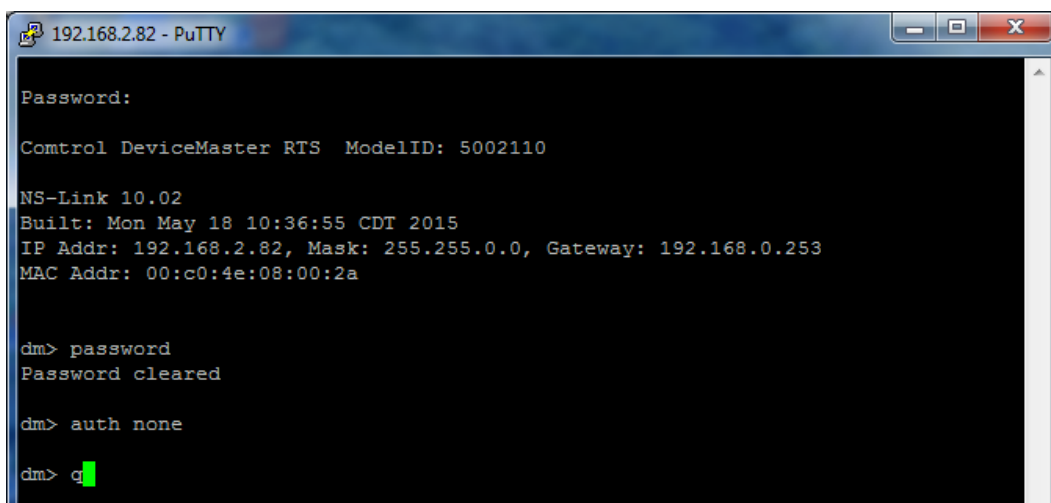
```
192.168.2.82 - PuTTY
Password:
Control DeviceMaster RTS ModelID: 5002110
NS-Link 10.02
Built: Mon May 18 10:36:55 CDT 2015
IP Addr: 192.168.2.82, Mask: 255.255.0.0, Gateway: 192.168.0.253
MAC Addr: 00:c0:4e:08:00:2a

dm> password
Password cleared

dm> auth none

dm>
```

To clear the authentication, at the dm> prompt enter “auth none” (without quotes) and press Enter.



```
192.168.2.82 - PuTTY
Password:
Control DeviceMaster RTS ModelID: 5002110
NS-Link 10.02
Built: Mon May 18 10:36:55 CDT 2015
IP Addr: 192.168.2.82, Mask: 255.255.0.0, Gateway: 192.168.0.253
MAC Addr: 00:c0:4e:08:00:2a

dm> password
Password cleared

dm> auth none

dm> q
```

At the dm> prompt enter “q” (without quotes) and press Enter to close the window.

If you have forgotten your password and need to remove it, see the document at this link:

http://downloads.comtrol.com/contribs/devicemaster/help_files/clearing_unknown_password.pdf