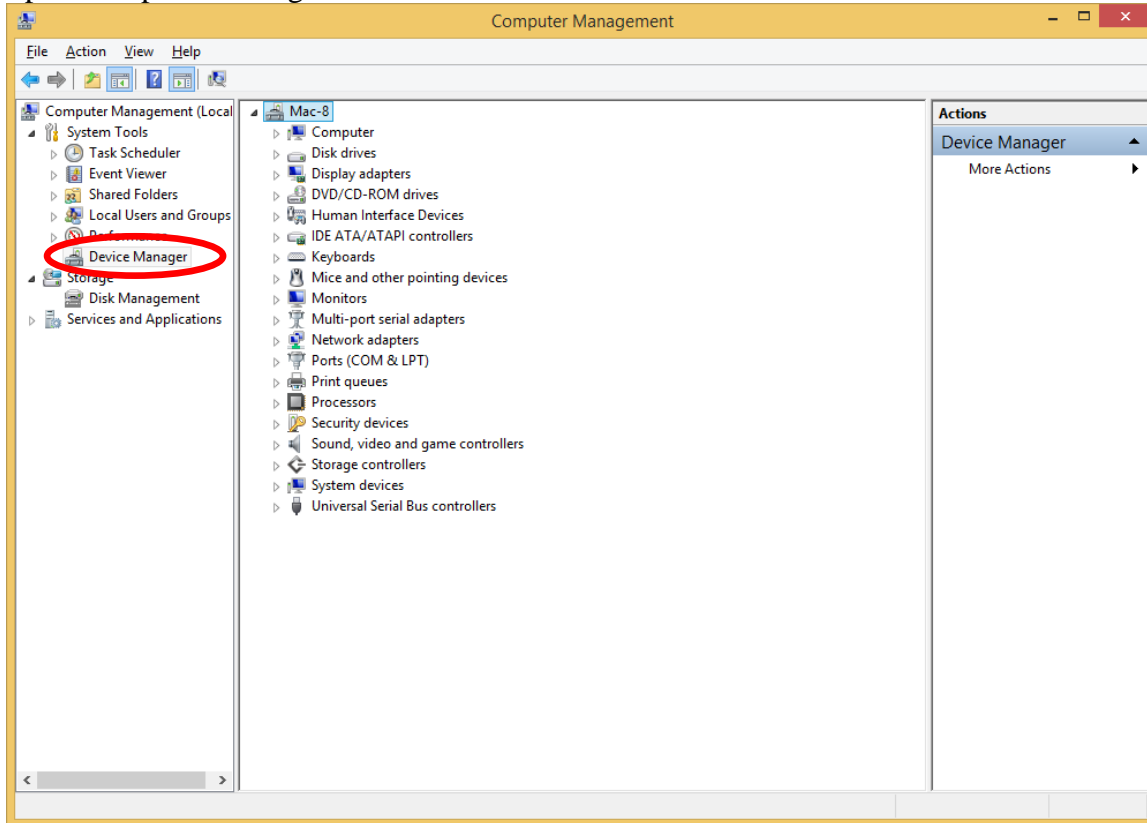


Manual DeviceMaster Driver Installation

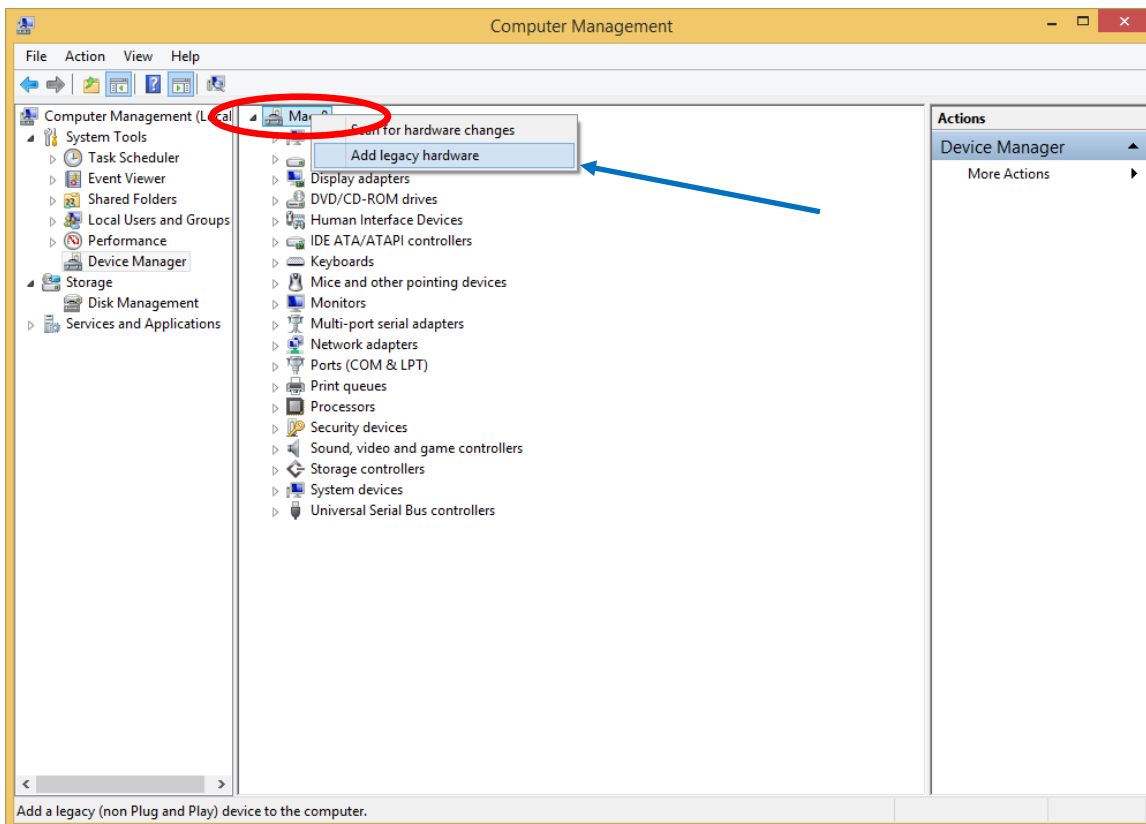
In this example there are several assumptions that are made here.

- 1) The current driver is already installed on this PC.
- 2) The new DeviceMaster has already had the firmware updated.
- 3) You are logged into the PC with admin rights

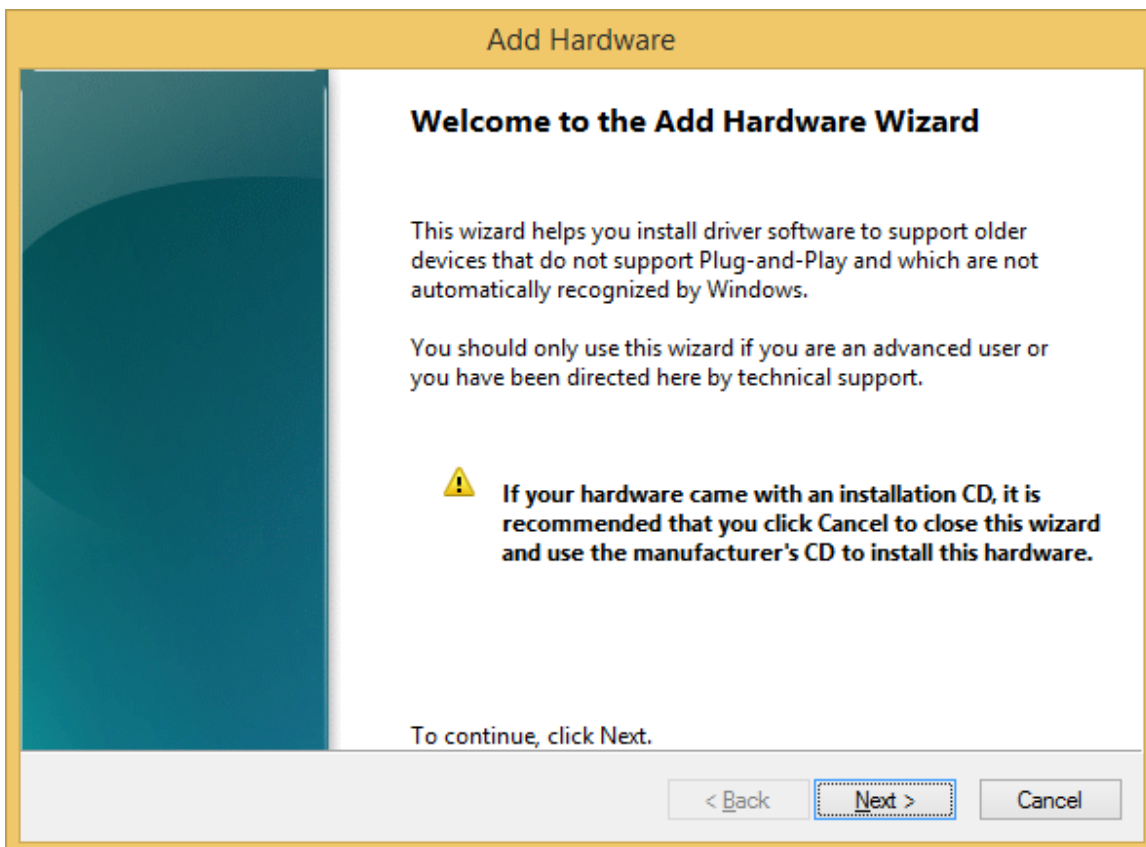
Open Computer Management



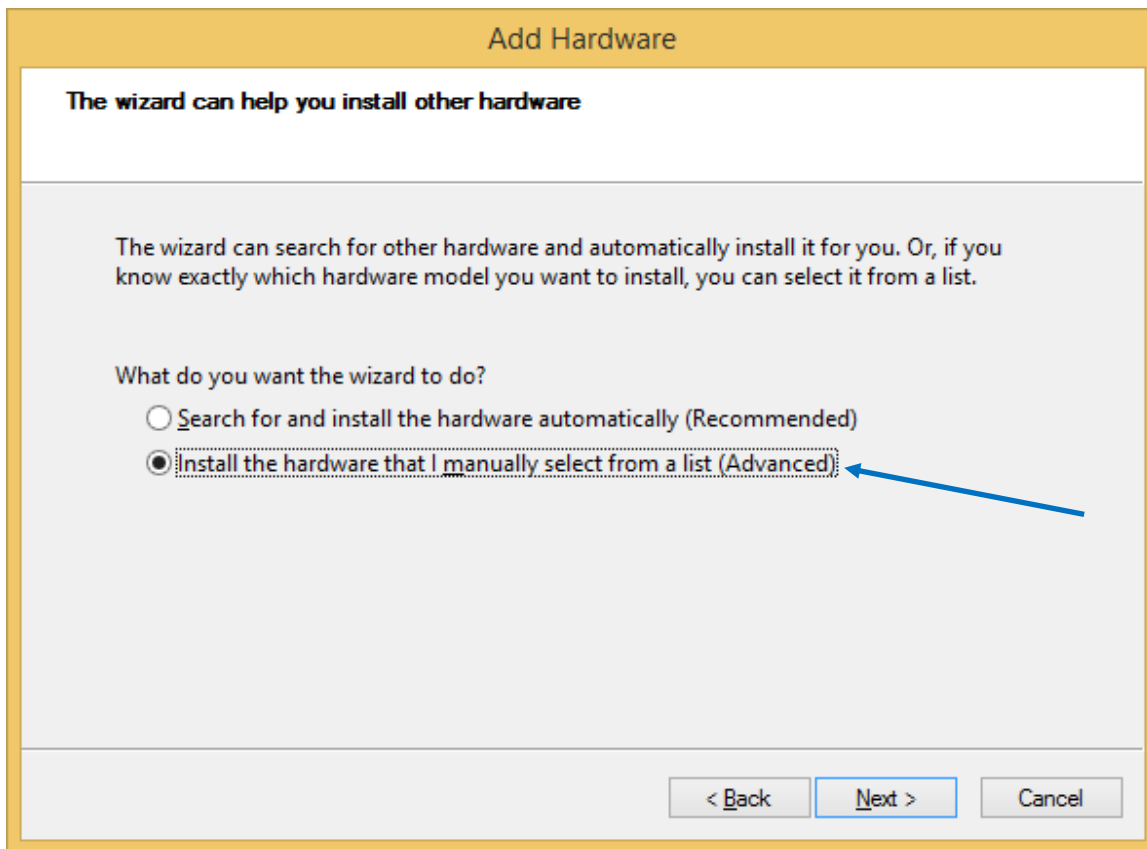
Opening Windows DeviceManager



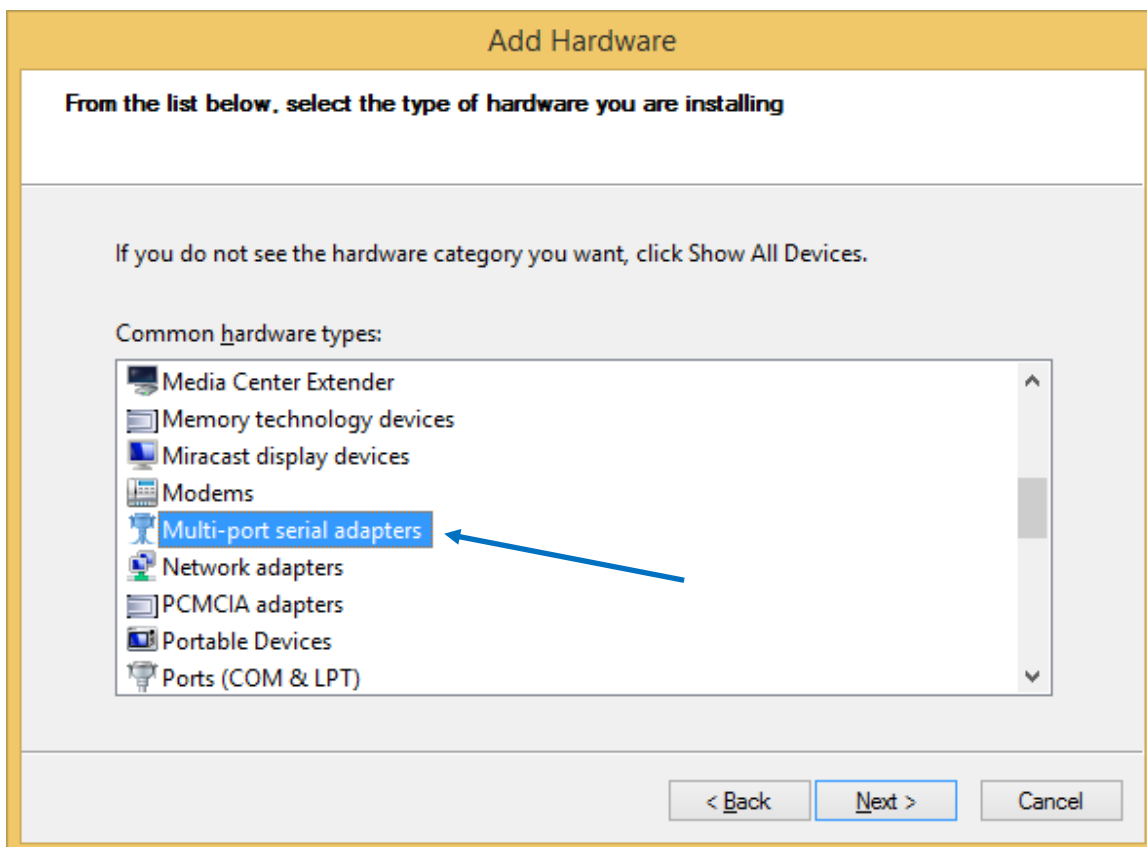
Right Click on the system name at the top of the list and select the “Add legacy hardware” from the pop-up.



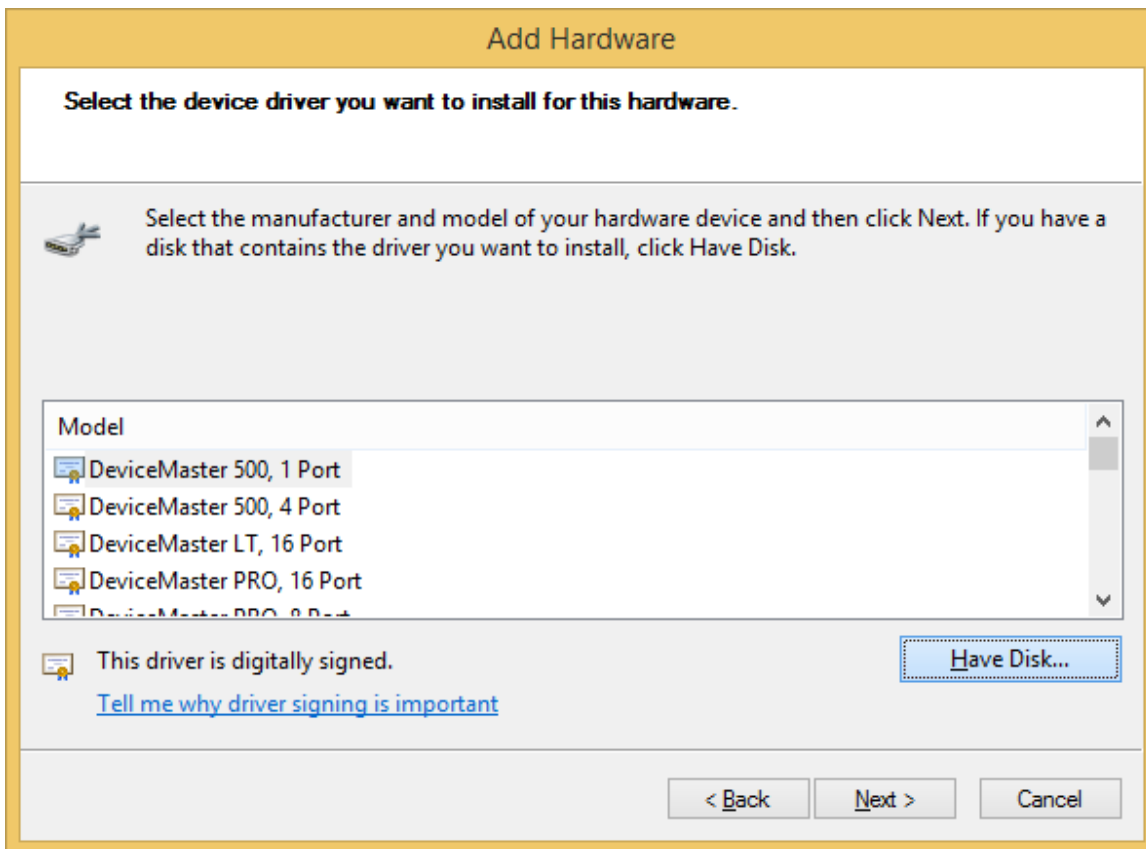
The Add Hardware wizard will start.
Click “Next”



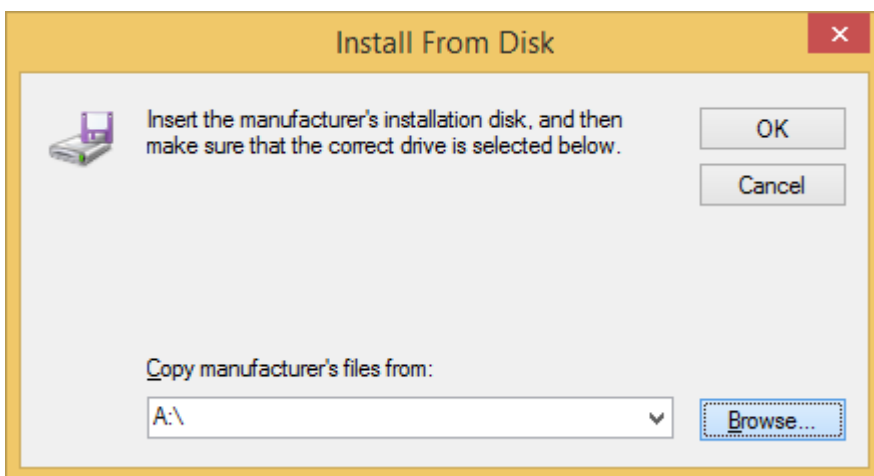
Select the option as shown here.
Click Next.



Select for the “Multi-port serial adapters”
Click “Next”

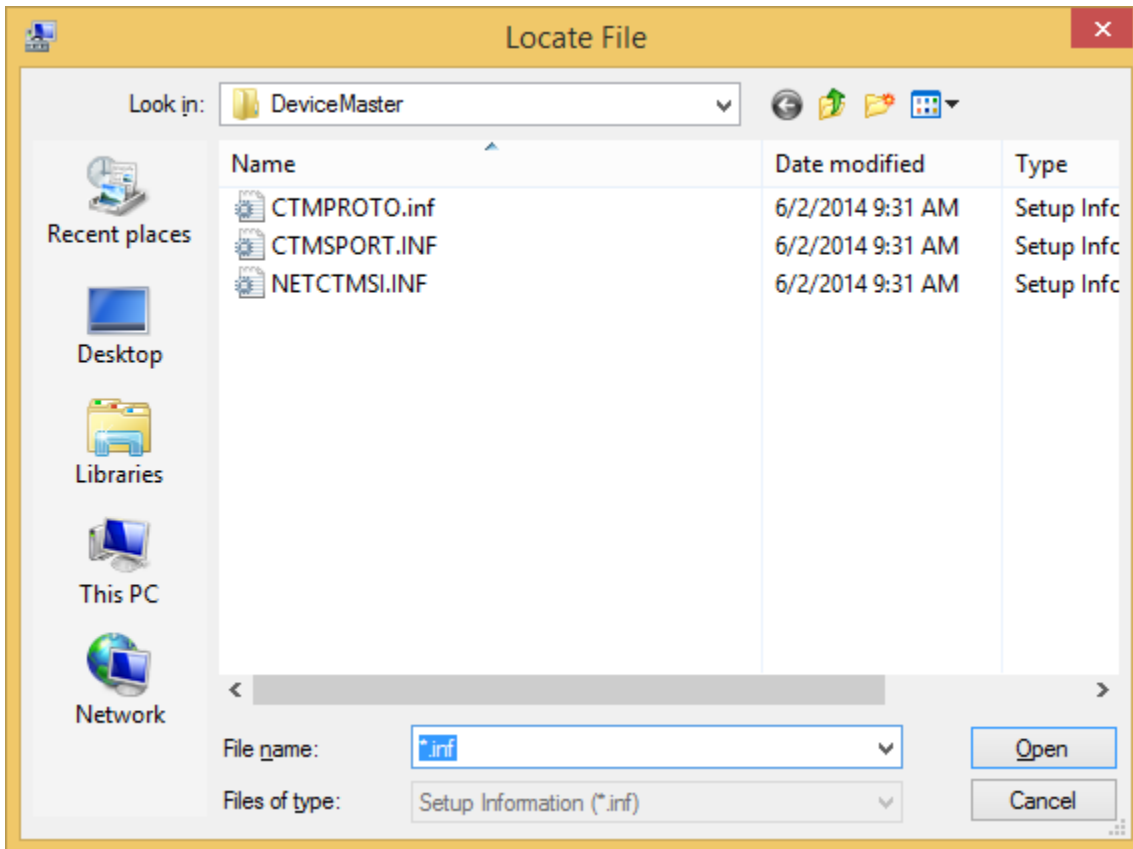


Click on “Have Disk...”

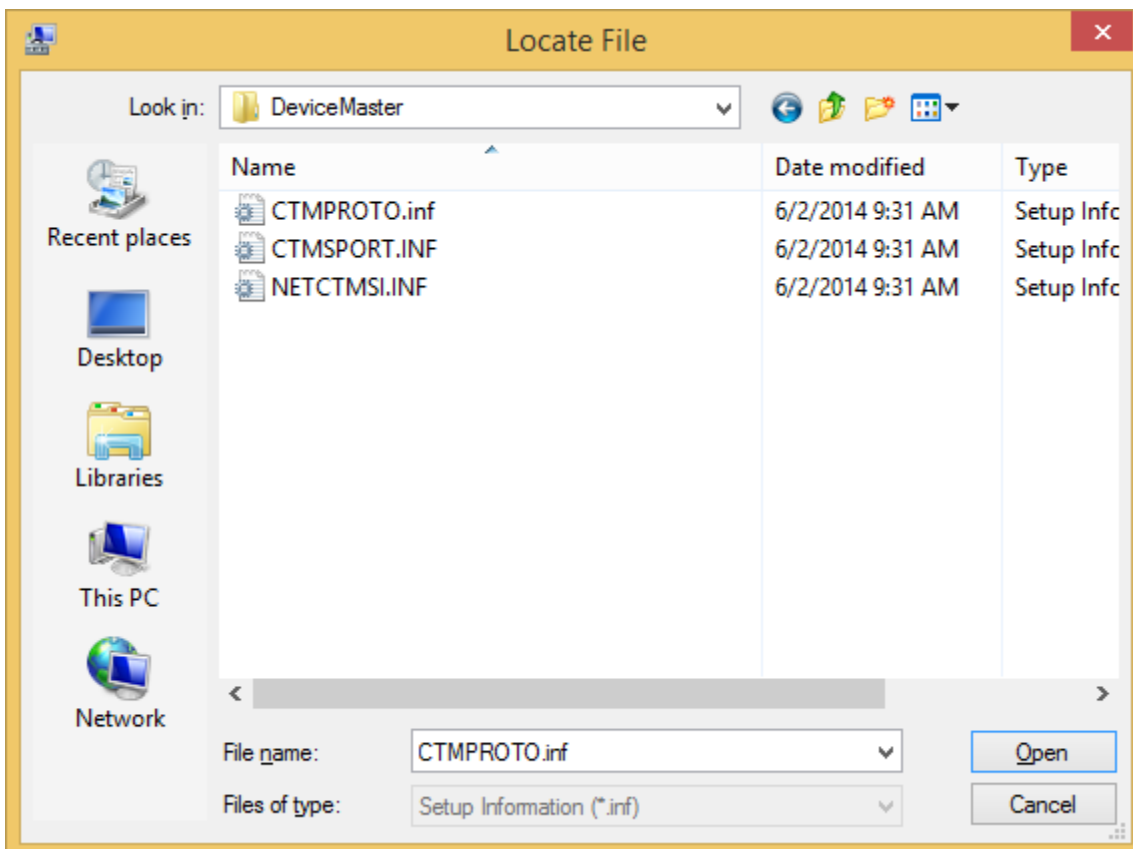


Click on “Browse”

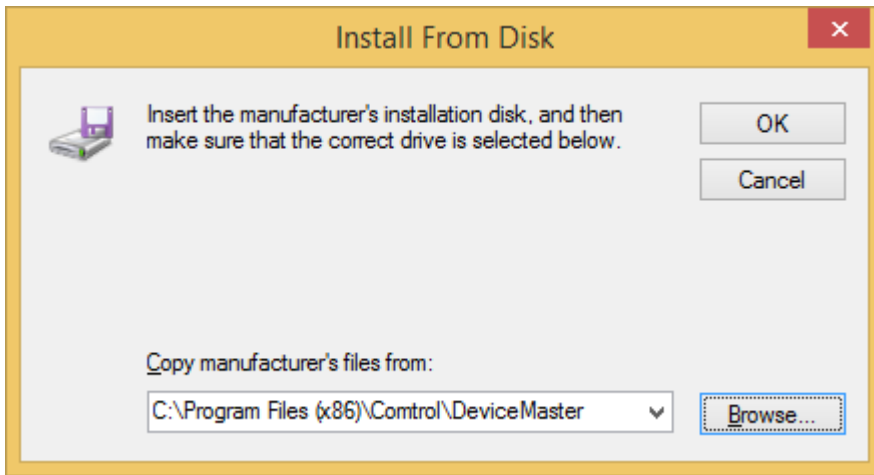
Path to this folder: C:\Program Files (x86)\Control\DeviceMaster\



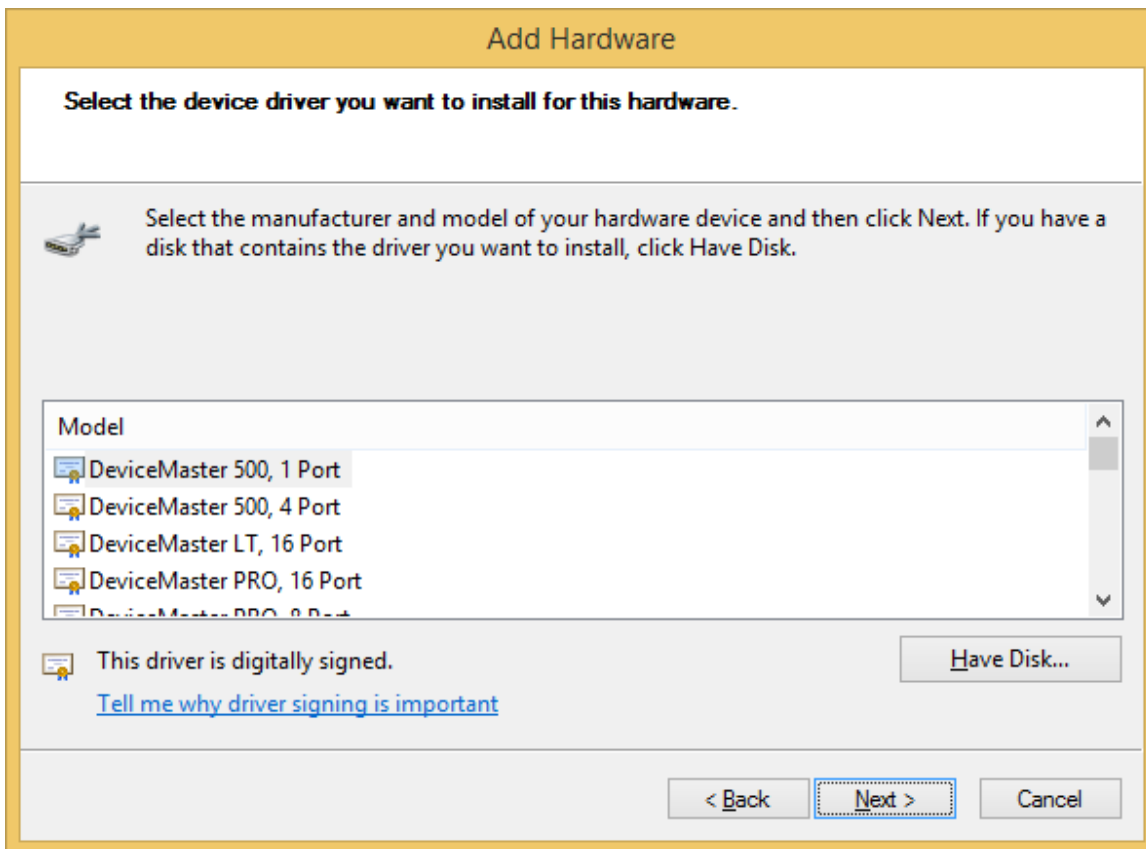
Select any one of the .inf files. The driver wizard will use the file that it wants when it wants it.



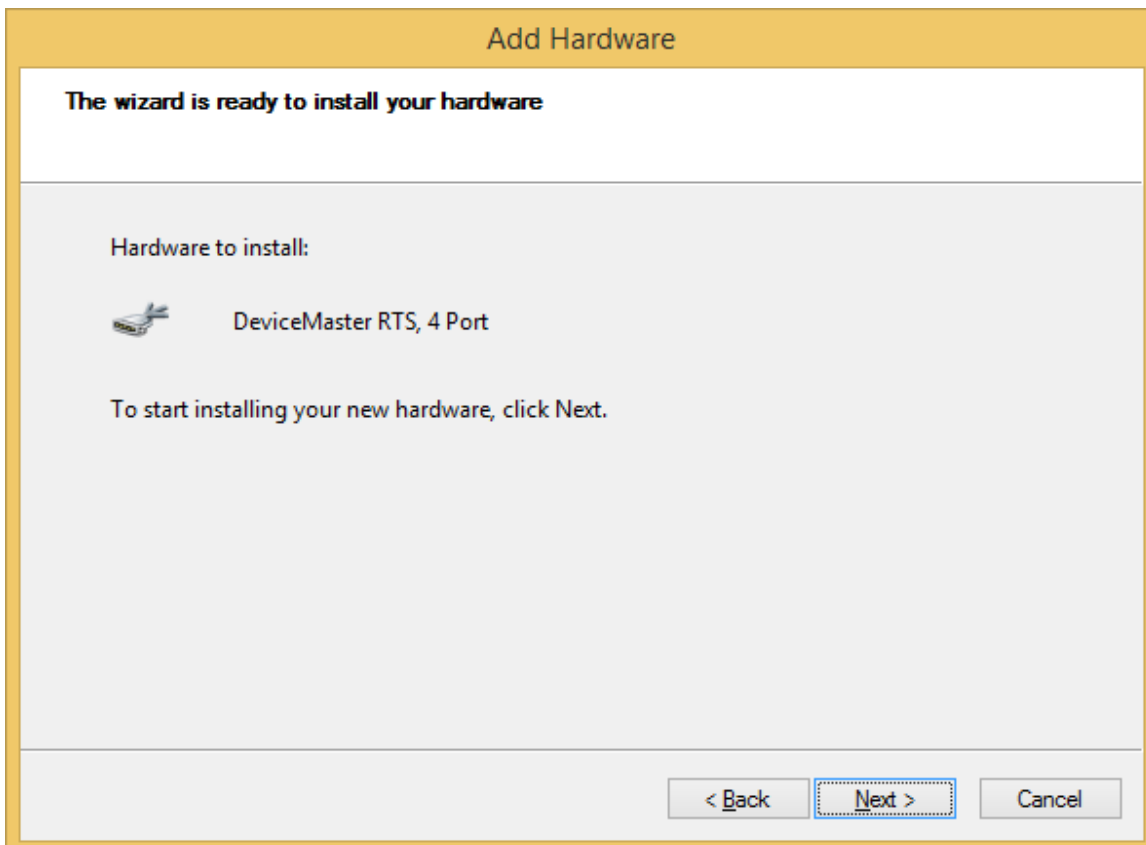
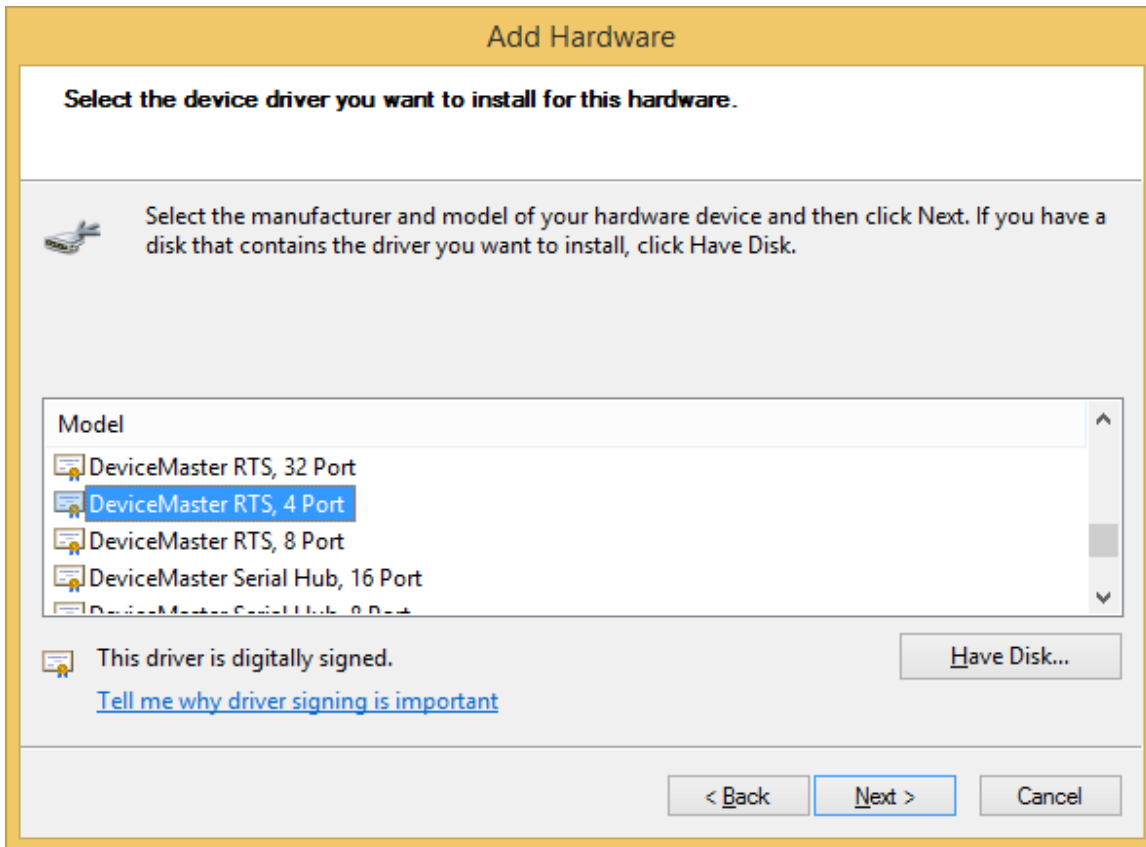
In this case we selected the CTMPROTO.inf file.
Click "Open"

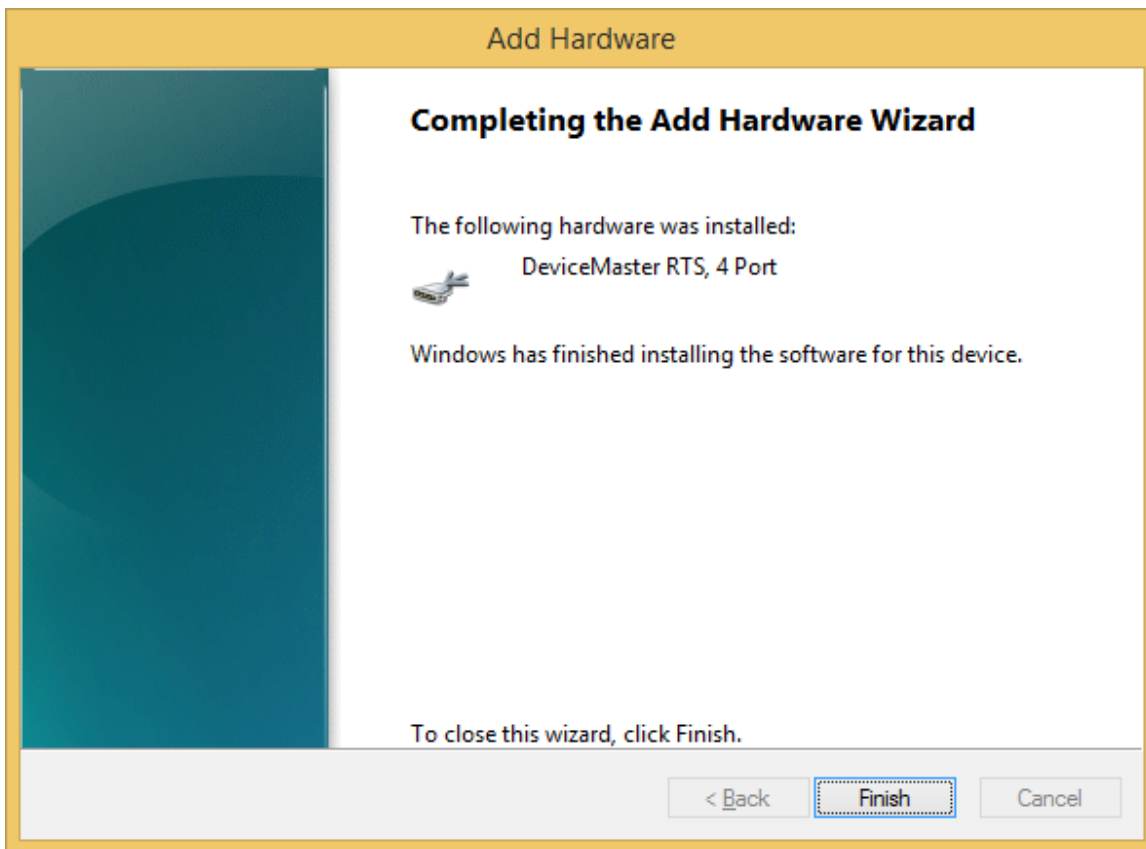


Only the directory path will be shown here.
Click 'OK'

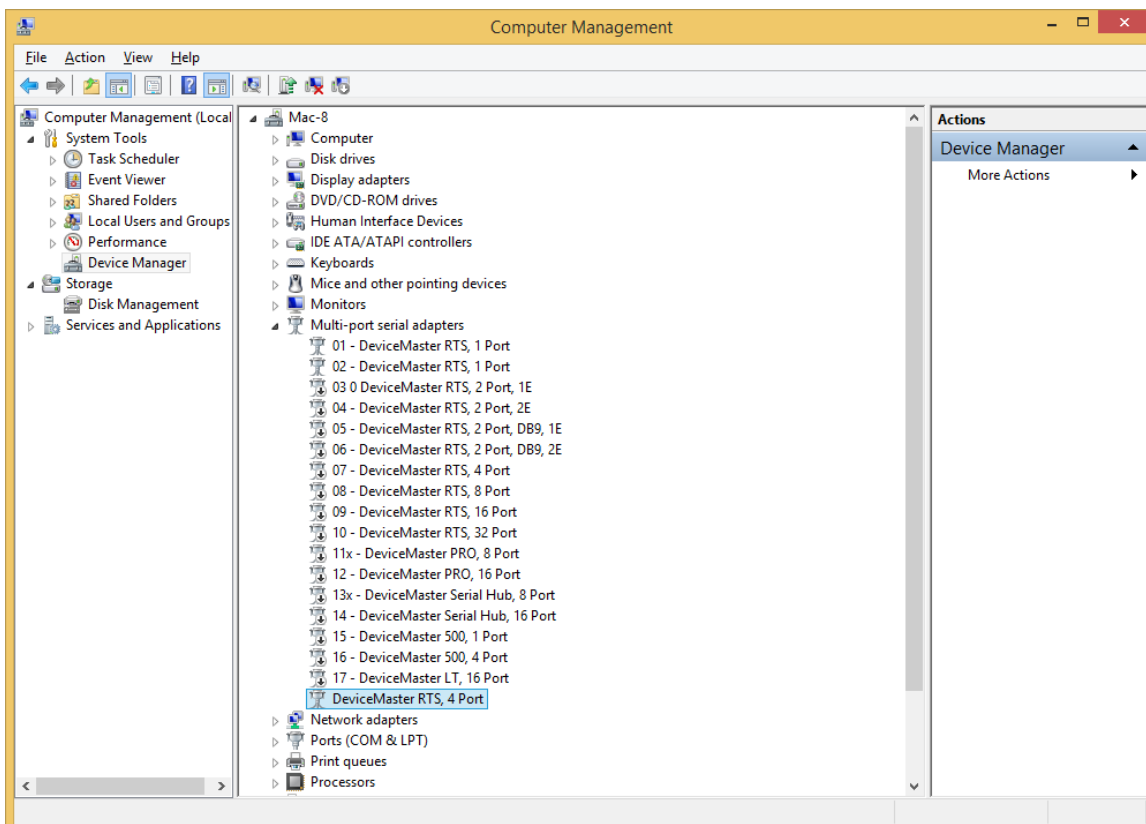


Scroll down to select the model to install.



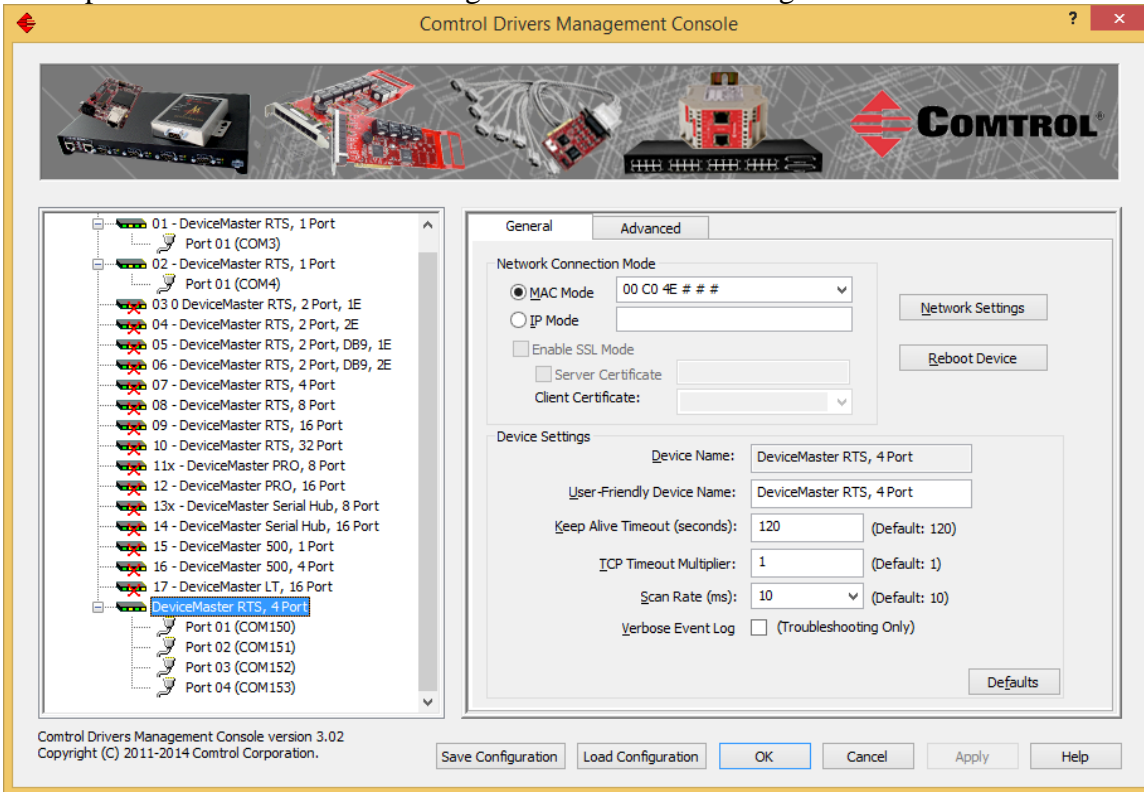


Click "Finish"

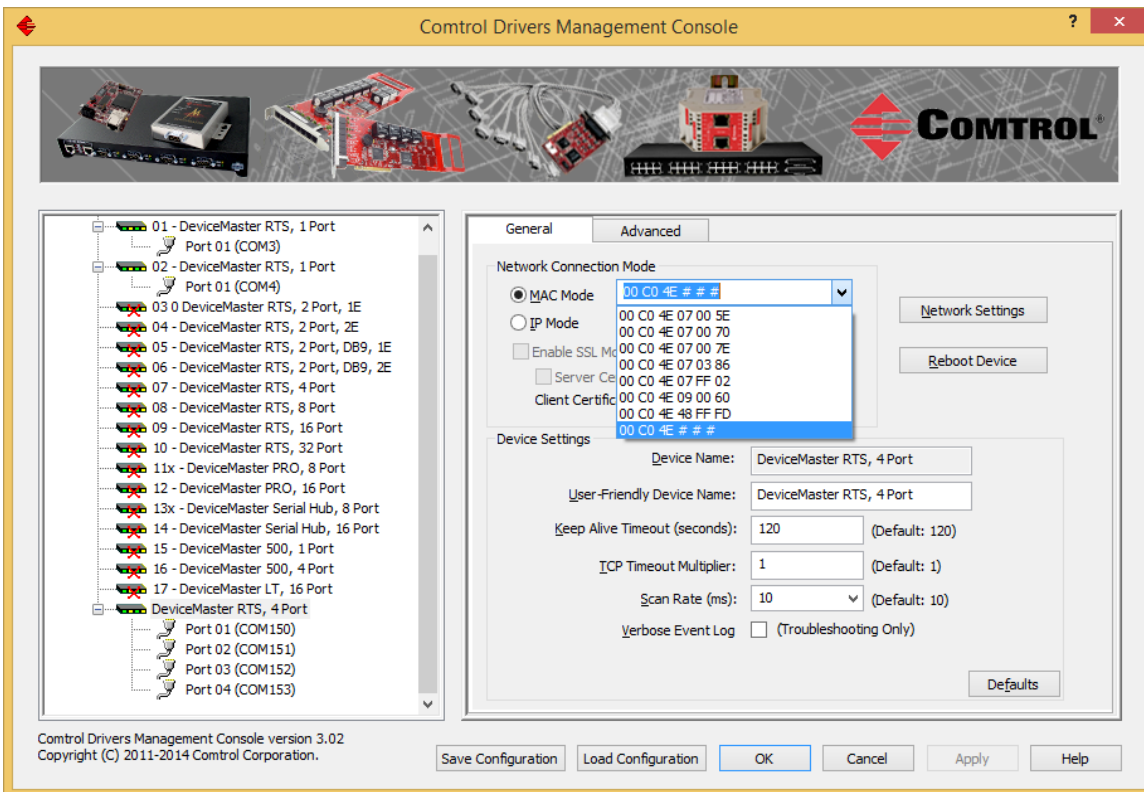


The new DeviceMaster will now be listed in Windows DeviceManager.
Close Windows DeviceManager

Now open the Control Driver Management Console to configure the new DeviceMaster as normal.



High-light the DeviceMaster as seen here



Select the MAC address as normal.

Change to IP mode if necessary, etc.

Check that the device is “Active and OK” in the “Advanced” tab.

Close Control Driver Management Console and test the DeviceMaster.