

# Cisco RJ45 Console to RocketPort/DeviceMaster RJ45 Port Wiring Diagram

Cisco Console Port RJ-45 (DTE)			Control RP/DM RJ-45 (DTE)	
Signal	Pin		Signal	Pin
CTS	1	↔	RTS	1
DTR	2	↔	DSR	7
TxD	3	↔	RxD	5
Gnd	4	cable colors	Gnd	3
Gnd	5	may vary	N/A	
RxD	6	↔	TxD	4
DSR	7	↔	DTR	2
RTS	8	↔	CTS	8

Cisco Console Port RJ-45 (DTE) as identified in Cisco’s document “Cabling Guide for Console and AUX Ports” Document ID: 12223, at this link:

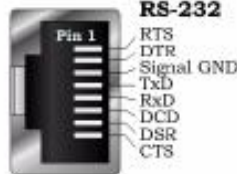
[http://www.cisco.com/en/US/products/hw/routers/ps332/products\\_tech\\_note09186a0080094ce6.shtml#topic5](http://www.cisco.com/en/US/products/hw/routers/ps332/products_tech_note09186a0080094ce6.shtml#topic5)

The Cisco supplied cable RJ45 to DB9 will be used for RocketPort/DeviceMaster products that have DB9 style connectors with no modifications necessary to the cable.

Control ports as identified in Control’s document customcables.pdf on page 16-17 at this link:

[ftp://ftp.control.com/tech\\_misc/cabling/customcables.pdf](ftp://ftp.control.com/tech_misc/cabling/customcables.pdf)

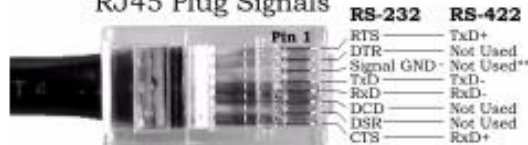
RJ45 Jack (Receptacle) Signals



Pinouts for the RJ45 Interface Module (RS-232/422)

The following figures provide pinout information for the RJ45 plug and receptacle for the RJ45 interface module.

RJ45 Plug Signals



\*\*Pin 3 is tied to ground on the board, but is not used in the cable.



*Note: Ring indicator is not supported on the RJ45 connector.*