



CONFIGURE COMTROL'S ROCKETPORT WITH VMware ESXi

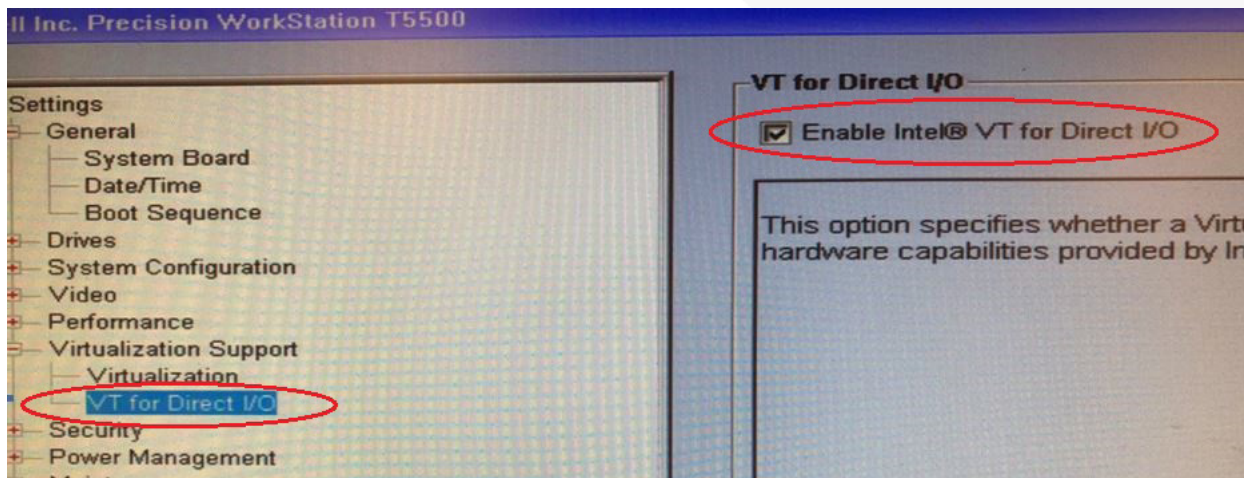
This document provides a general overview for adding a RocketPort card to a VMware ESXi environment.

Environment:

Dell Precision WorkStation T5500
500 Gigabyte SATA drive
8 Gigabytes RAM Host memory
VMware ESXi 6.5.0
Guest Operating System - Windows 10 Enterprise
RocketPort Infinity Octa, DB9, uPCI
RocketPort Express, Octa DB9 PCIe
RocketPort uPCI 16 port

Pre-requisites:

1. A host computer must have "Intel Virtualization Technology for Directed I/O" enabled in BIOS.



2. Ensure vmware tools is installed on the Guest Operating System

Overview:

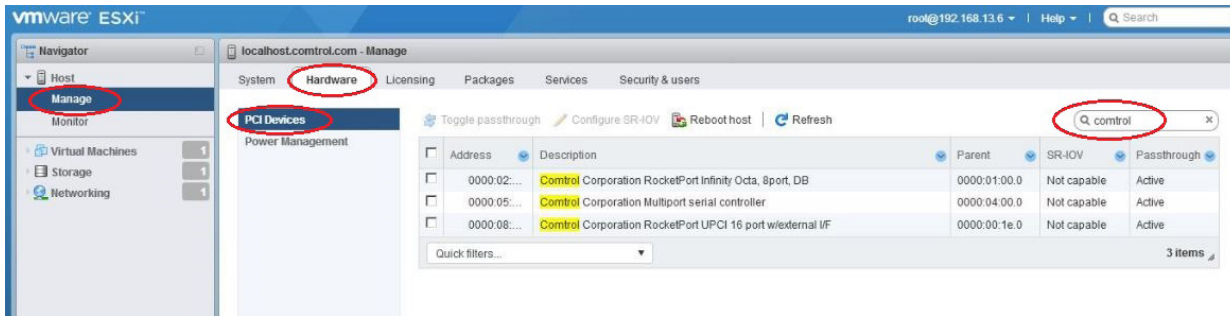
Adding a RocketPort card is a two step process within the ESXi configuration.

1. Enable the RocketPort (RP) card to be available through ESXi Host (Direct I/O).
2. Assign the RocketPort card to be used by the Guest Operating System.

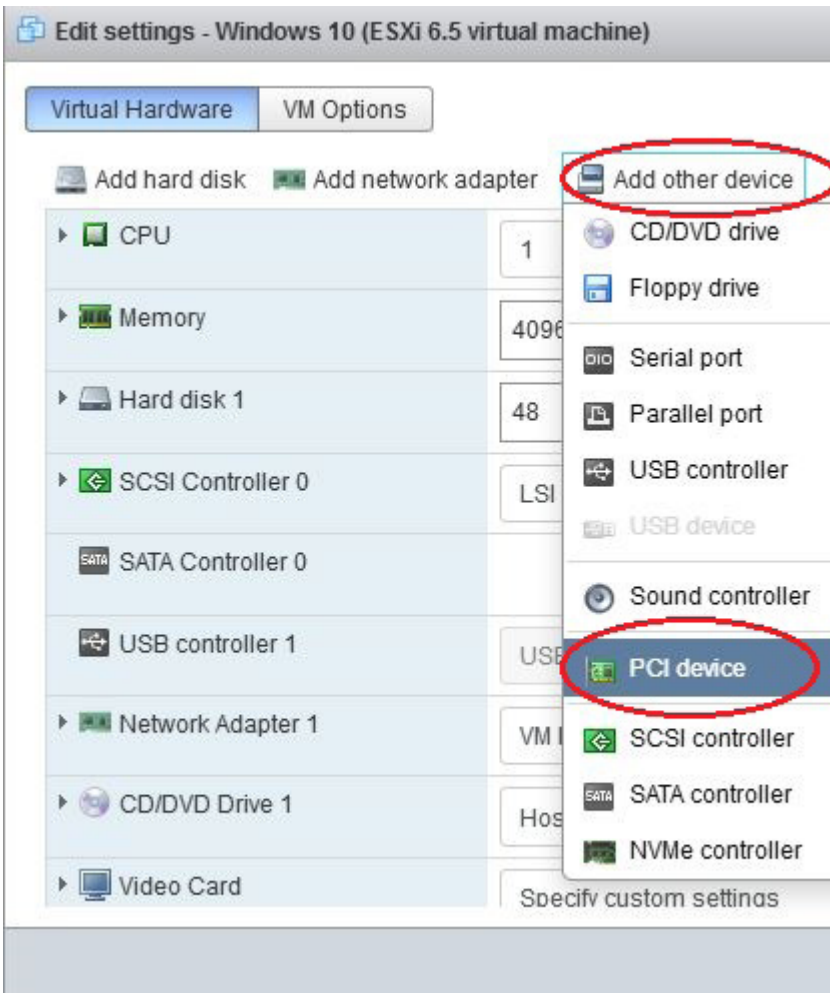
Procedure:

1. Enable the RP card to be available:
 - a. From within a web browser, Enter the IP Address of your ESXi server
 - b. Login with your username and password
 - c. In the VMware ESXi web client, Go to 'Host' -> 'Manage' in the left (Navigator) part of the GUI.

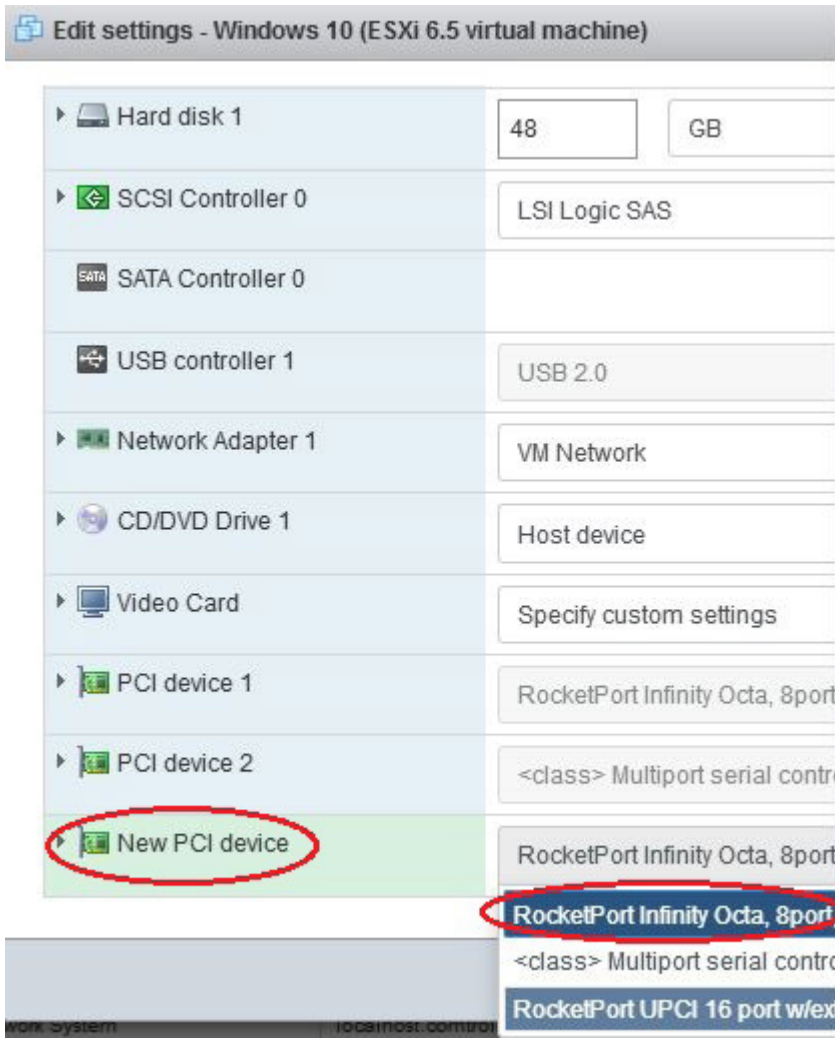
In the right part of the GUI, select the 'Hardware' tab and select 'PCI Devices'. Search for Control, to display the RocketPort cards.



- d. Select the cards that will be available to the VM guest and select 'Toggle passthrough'. Reboot the Host ESXi computer.
2. Make PCI card enabled with Direct I/O available to the Guest Operating System.
 - a. Select the Guest Virtual Machine (powered off) and go to the 'Actions Tab' -> 'Edit settings'
 - b. In the 'Edit Settings' window, select Add other device -> 'PCI device' for your RocketPort card(s).



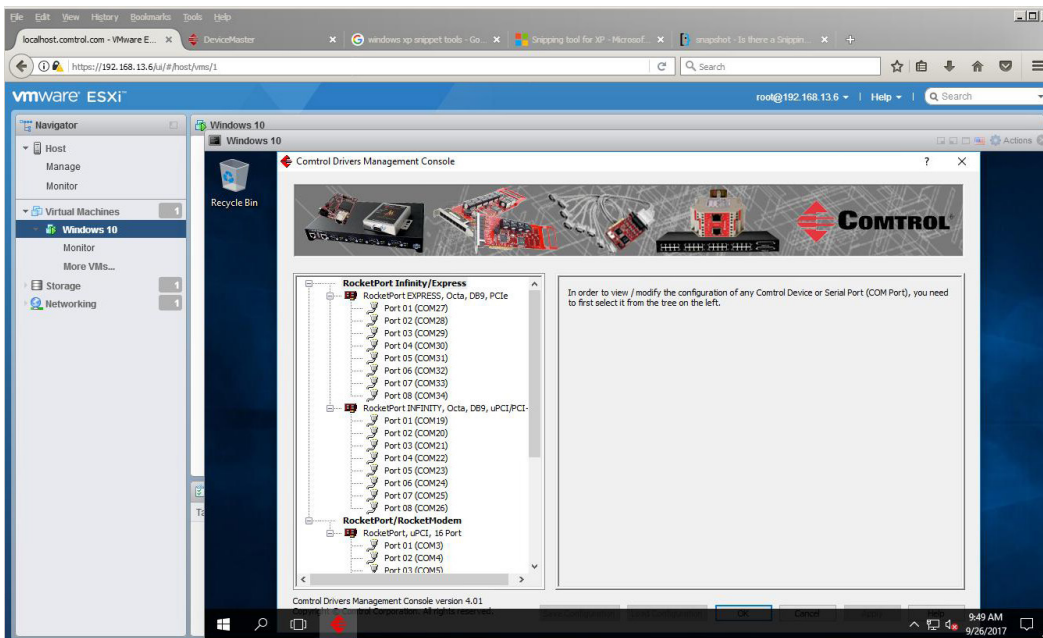
c. Select the RP Card for the PCI Adapter just added.



d. Install the RocketPort driver for the installed cards within the guest Virtual Machine.

e. To verify the driver is installed, Go to the 'Start Menu' -> 'All Programs' -> 'Control' -> 'RocketPort' -> 'RocketPort Drivers Management Console'

The GUI should display the RocketPort cards and Com Port assignments.



Notes:

Ensure vmware tools is installed on guest o/s.

When adding the RocketPort card to the guest O/S through the settings, ensure the VM is powered off.

References:

See these links for additional information and the procedure for enabling the PCI Device (RocketPort card) for the HOST for I/O passthrough.

https://pubs.vmware.com/vsphere-51/index.jsp?topic=%2Fcom.vmware.vsphere.vm_admin.doc%2FGUID-058AEDF0-117E-4E17-956D-37181E22D499.html&resultof=%22%41%64%64%22%20%22%61%64%64%22%20%22%50%43%49%22%20%22%70%63%69%22%20

https://kb.vmware.com/selfservice/microsites/search.do?language=en_US&cmd=displayKC&externalId=1010789

CONTACT AND SUPPORT INFORMATION

Warranty Information

Control offers a 30-day satisfaction guarantee and 5-year limited warranty.

Sales Support

+1.763.957.6000
sales@control.com

Technical Support

+1.763.957.6000
www.control.com/support

Email, FTP, and Web Support

info@control.com
ftp.control.com
www.control.com